

# DOCK180 antibody



Catalog Number: 109976

## Product name

DOCK180 antibody

IP: 1:500-1:5000

IHC: 1:20-1:200

## Specificity

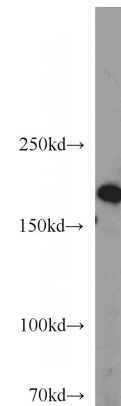
Human; other species not tested.

IF: 1:10-1:100

## Antibody description

DOCK180 Rabbit Polyclonal antibody. Positive WB detected in HEK-293 cells, A431 cells, HeLa cells, MCF7 cells. Positive IP detected in HeLa cells. Positive IHC detected in human colon tissue. Positive IF detected in HeLa cells. Observed molecular weight by Western-blot: 180 kDa

## Validations



## Preparation

This antibody was obtained by immunization of DOCK180 recombinant protein (Accession Number: NM\_001380). Purification method: Antigen Affinity purified.

HEK-293 cells were subjected to SDS PAGE followed by western blot with Catalog No:109976(DocK1 antibody) at dilution of 1:1000

## Formulation

PBS with 0.02% sodium azide and 50% glycerol pH 7.3.

## Storage

Store at -20°C. DO NOT ALIQUOT

## Clonality

Polyclonal

## Ig Type

Rabbit IgG

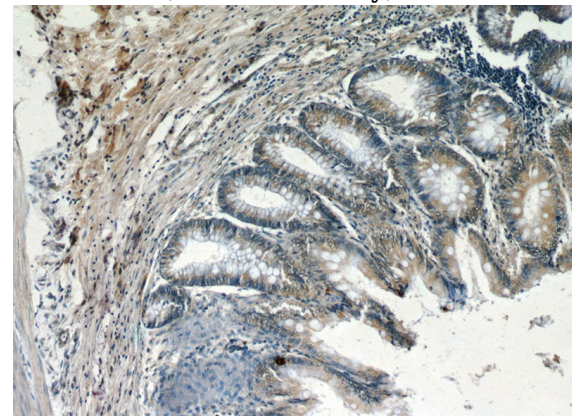
## Applications

ELISA, WB, IHC, IP, IF

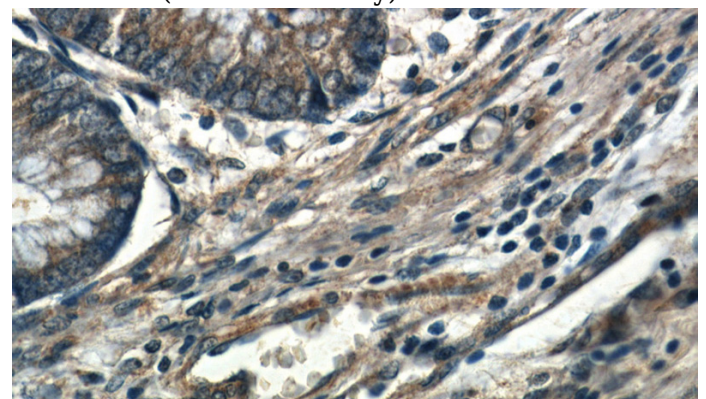
## Dilutions

Recommended Dilution:

WB: 1:500-1:5000



Immunohistochemistry of paraffin-embedded human colon slide using Catalog No:109976(DocK1 Antibody) at dilution of 1:50

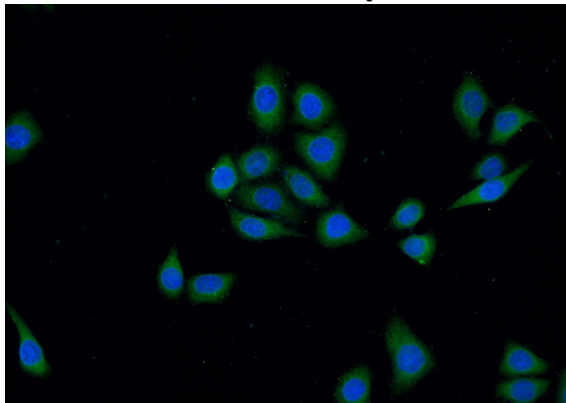


# DOCK180 antibody

Catalog Number: 109976

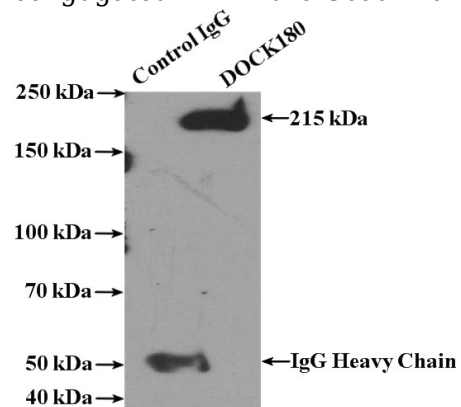
---

Immunohistochemistry of paraffin-embedded human colon slide using Catalog No:109976(DocK1 Antibody) at dilution of 1:50



Immunofluorescent analysis of (-20oc Ethanol) fixed HeLa cells using Catalog No:109976(DocK1

Antibody) at dilution of 1:25 and Alexa Fluor 488-conjugated AffiniPure Goat Anti-Rabbit IgG(H+L)



IP Result of anti-Dock1 (IP:Catalog No:109976, 4ug; Detection:Catalog No:109976 1:1000) with HeLa cells lysate 3200ug.