

# DNASE1L1 antibody



Catalog Number: 109958

## Product name

DNASE1L1 antibody

WB: 1:200-1:2000

IP: 1:200-1:2000

## Specificity

Human, Mouse, Rat; other species not tested.

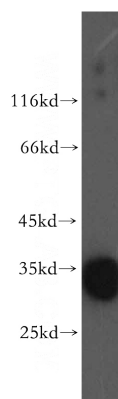
IHC: 1:20-1:200

IF: 1:10-1:100

## Antibody description

DNASE1L1 Rabbit Polyclonal antibody. Positive WB detected in mouse skeletal muscle tissue. Positive IP detected in mouse skeletal muscle tissue. Positive IF detected in MCF-7 cells. Positive IHC detected in human skeletal muscle tissue. Observed molecular weight by Western-blot: 34 kDa

## Validations



## Preparation

This antibody was obtained by immunization of DNASE1L1 recombinant protein (Accession Number: XM\_005277829). Purification method: Antigen affinity purified.

mouse skeletal muscle tissue were subjected to SDS PAGE followed by western blot with Catalog No:109958(DNASE1L1 antibody) at dilution of 1:1000

## Formulation

PBS with 0.02% sodium azide and 50% glycerol pH 7.3.

## Storage

Store at -20°C. DO NOT ALIQUOT

## Clonality

Polyclonal

## Ig Type

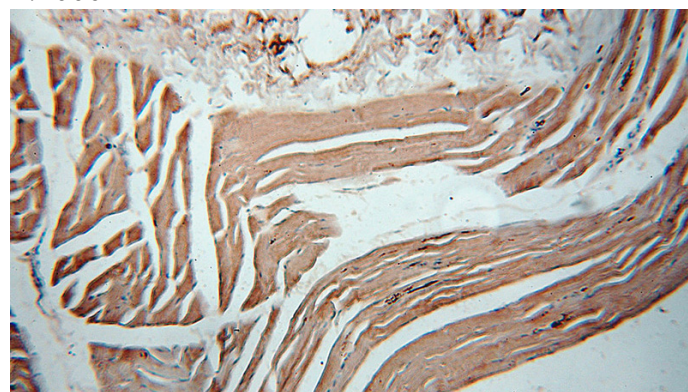
Rabbit IgG

## Applications

ELISA, WB, IHC, IF, IP

## Dilutions

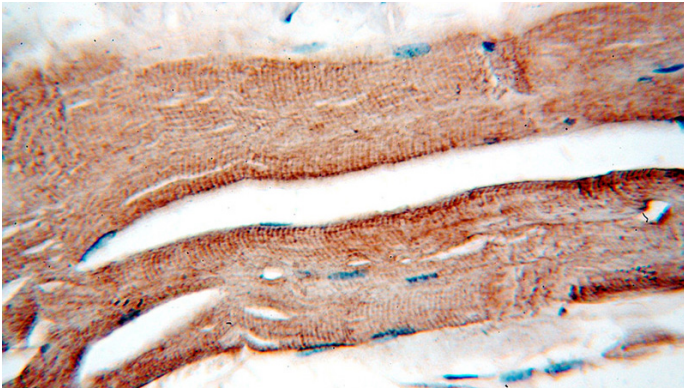
Recommended Dilution:



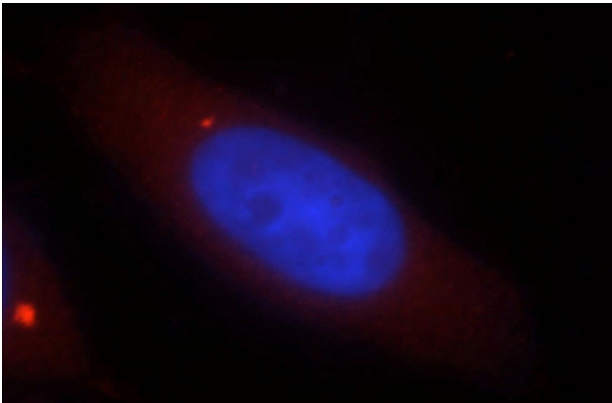
Immunohistochemical of paraffin-embedded human skeletal muscle using Catalog No:109958(DNASE1L1 antibody) at dilution of 1:50 (under 10x lens)

# DNASE1L1 antibody

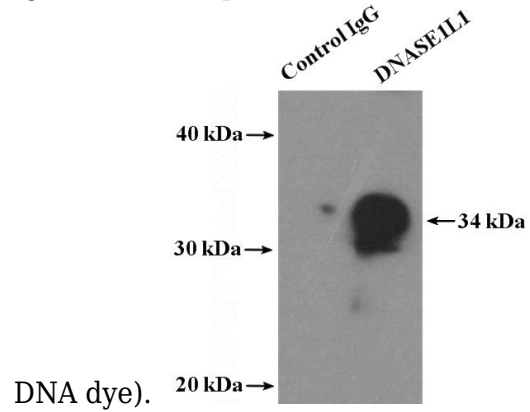
Catalog Number: 109958



Immunohistochemical of paraffin-embedded human skeletal muscle using Catalog No:109958(DNASE1L1 antibody) at dilution of 1:50 (under 40x lens)



Immunofluorescent analysis of MCF-7 cells, using DNASE1L1 antibody Catalog No:109958 at 1:25 dilution and Rhodamine-labeled goat anti-rabbit IgG (red). Blue pseudocolor = DAPI (fluorescent



IP Result of anti-DNASE1L1 (IP:Catalog No:109958, 4ug; Detection:Catalog No:109958 1:800) with mouse skeletal muscle tissue lysate 4000ug.