

DIAP1 antibody



Catalog Number: 109937

Product name

DIAP1 antibody

Specificity

Human, Mouse, Rat, Monkey; other species not tested.

Antibody description

DIAP1 Rabbit Polyclonal antibody. Positive IF detected in HepG2 cells, HeLa cells. Positive IP detected in HeLa cells. Positive WB detected in HeLa cells, COS-7 cells, human heart tissue, human skeletal muscle tissue, NIH/3T3 cells. Observed molecular weight by Western-blot: 140-150 kDa

Preparation

This antibody was obtained by immunization of DIAP1 recombinant protein (Accession Number: BC007411). Purification method: Antigen affinity purified.

Formulation

PBS with 0.02% sodium azide and 50% glycerol pH 7.3.

Storage

Store at -20°C. DO NOT ALIQUOT

Clonality

Polyclonal

Ig Type

Rabbit IgG

Applications

ELISA, WB, IF, IP

Dilutions

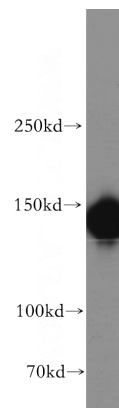
Recommended Dilution:

WB: 1:1000-1:10000

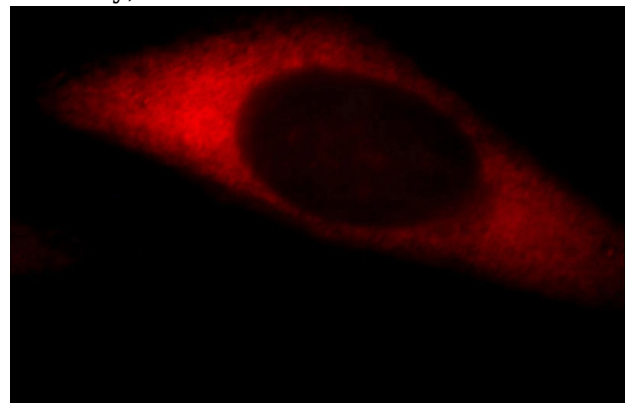
IP: 1:200-1:2000

IF: 1:10-1:100

Validations



HeLa cells were subjected to SDS PAGE followed by western blot with Catalog No:109937(DIAP1 antibody) at dilution of 1:500

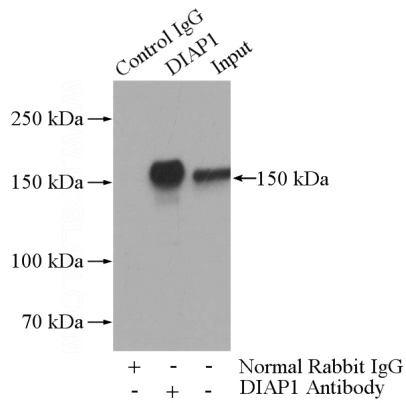


Immunofluorescent analysis of HepG2 cells, using DIAPH1 antibody Catalog No:109937 at 1:25 dilution and Rhodamine-labeled goat anti-rabbit

DIAP1 antibody

Catalog Number: 109937

IP Result of anti-DIAP1 (IP:Catalog No:109937, 4ug; Detection:Catalog No:109937 1:500) with HeLa cells lysate 1200ug.



IgG (red).