

# DIABLO antibody



Catalog Number: 109936

## Product name

DIABLO antibody

WB: 1:500-1:5000

IP: 1:200-1:2000

## Specificity

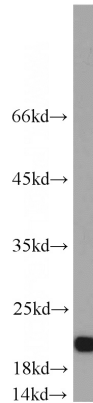
Human, Mouse, Rat; other species not tested.

IHC: 1:20-1:200

## Antibody description

DIABLO Rabbit Polyclonal antibody. Positive IP detected in HEK-293 cells. Positive WB detected in HepG2 cells, HEK-293 cells, HeLa cells, Jurkat cells, mouse testis tissue, Sp2/0 cells. Positive IHC detected in human testis tissue, human kidney tissue. Observed molecular weight by Western-blot: 20 kDa

## Validations



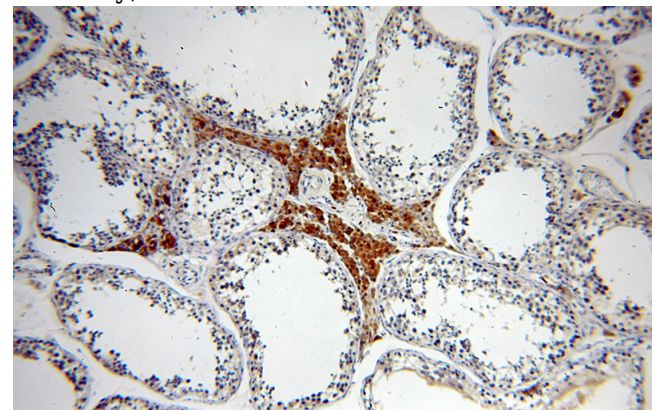
## Preparation

This antibody was obtained by immunization of DIABLO recombinant protein (Accession Number: NM\_001371333). Purification method: Antigen affinity purified.

HepG2 cells were subjected to SDS PAGE followed by western blot with Catalog No:109936(DIABLO antibody) at dilution of 1:1000

## Formulation

PBS with 0.1% sodium azide and 50% glycerol pH 7.3.



## Storage

Store at -20°C. DO NOT ALIQUOT

## Clonality

Polyclonal

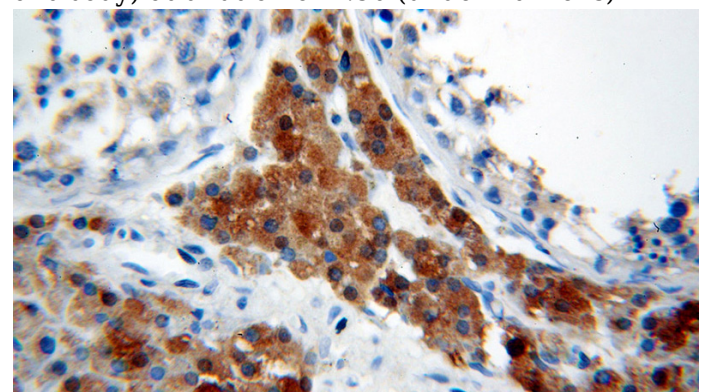
Immunohistochemical of paraffin-embedded human testis using Catalog No:109936(DIABLO antibody) at dilution of 1:50 (under 10x lens)

## Ig Type

Rabbit IgG

## Applications

ELISA, WB, IHC, IP



## Dilutions

Recommended Dilution:

# DIABLO antibody

Catalog Number: 109936

Immunohistochemical of paraffin-embedded human testis using Catalog No:109936(DIABLO antibody) at dilution of 1:50 (under 40x lens)

IP Result of anti-DIABLO (IP:Catalog No:109936, 4ug; Detection:Catalog No:109936 1:500) with HEK-293 cells lysate 2000ug.

