

DHX36 antibody



Catalog Number: 109932

Product name

DHX36 antibody

IP: 1:200-1:2000

IHC: 1:20-1:200

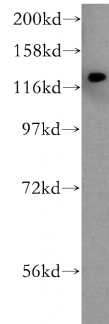
Specificity

Human, Mouse, Rat; other species not tested.

Antibody description

DHX36 Rabbit Polyclonal antibody. Positive IHC detected in human prostate tissue. Positive WB detected in human brain tissue, human liver tissue, PC-3 cells. Positive IP detected in PC-3 cells. Observed molecular weight by Western-blot: 120 kDa

Validations



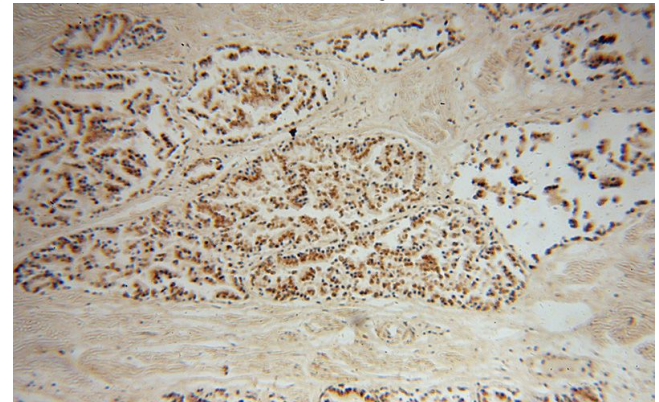
Preparation

This antibody was obtained by immunization of DHX36 recombinant protein (Accession Number: BC036035). Purification method: Antigen affinity purified.

human brain tissue were subjected to SDS PAGE followed by western blot with Catalog No:109932(DHX36 antibody) at dilution of 1:800

Formulation

PBS with 0.02% sodium azide and 50% glycerol pH 7.3.



Storage

Store at -20°C. DO NOT ALIQUOT

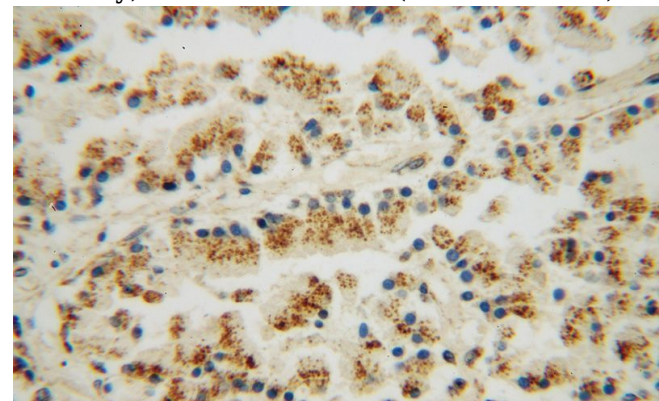
Clonality

Polyclonal

Immunohistochemical of paraffin-embedded human prostate using Catalog No:109932(DHX36 antibody) at dilution of 1:50 (under 10x lens)

Ig Type

Rabbit IgG



Applications

ELISA, WB, IHC, IP

Dilutions

Recommended Dilution:

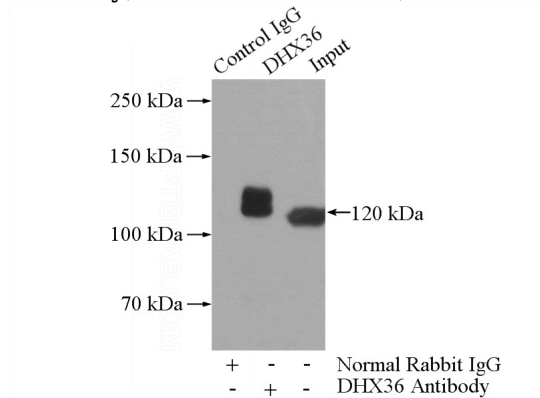
WB: 1:200-1:2000

Immunohistochemical of paraffin-embedded human prostate using Catalog No:109932(DHX36

DHX36 antibody

Catalog Number: 109932

antibody) at dilution of 1:50 (under 40x lens)



IP Result of anti-DHX36 (IP:Catalog No:109932, 5ug; Detection:Catalog No:109932 1:500) with PC-3 cells lysate 1880ug.