

DGKE antibody

Catalog Number: 109911

Product name

DGKE antibody

Specificity

Human, Mouse, Rat; other species not tested.

Antibody description

DGKE Rabbit Polyclonal antibody. Positive IHC detected in human prostate cancer tissue. Positive WB detected in HEK-293 cells, human brain tissue. Observed molecular weight by Western-blot: 60-64kd

Preparation

This antibody was obtained by immunization of DGKE recombinant protein (Accession Number: BC022297). Purification method: Antigen affinity purified.

Formulation

PBS with 0.1% sodium azide and 50% glycerol pH 7.3.

Storage

Store at -20°C. DO NOT ALIQUOT

Clonality

Polyclonal

Ig Type

Rabbit IgG

Applications

ELISA, WB, IHC

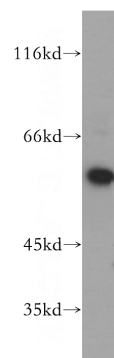
Dilutions

Recommended Dilution:

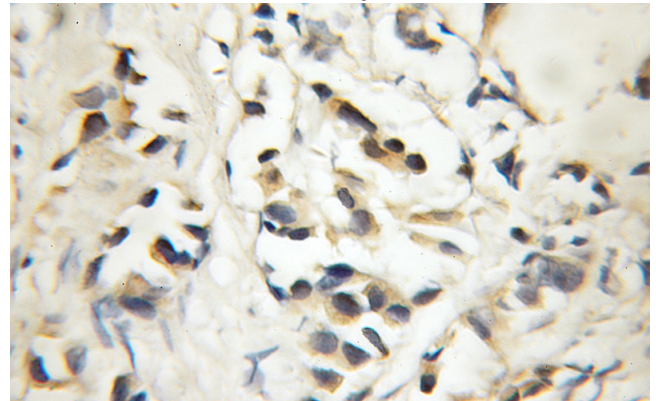
WB: 1:500-1:5000

IHC: 1:20-1:200

Validations



HEK-293 cells were subjected to SDS PAGE followed by western blot with Catalog No:109911(DGKE antibody) at dilution of 1:400



Immunohistochemical of paraffin-embedded human prostate cancer using Catalog No:109911(DGKE antibody) at dilution of 1:50 (under 10x lens)