

# DEK antibody

Catalog Number: 109886

## Product name

DEK antibody

WB: 1:1000-1:10000

IP: 1:200-1:2000

## Specificity

Human, Mouse, Rat; other species not tested.

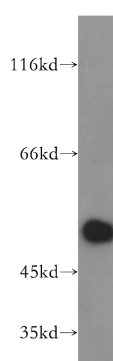
IHC: 1:20-1:200

IF: 1:10-1:100

## Antibody description

DEK Rabbit Polyclonal antibody. Positive IP detected in HeLa cells. Positive WB detected in HeLa cells, A375 cells, A431 cells, K-562 cells, mouse brain tissue, rat brain tissue. Positive IHC detected in human brain tissue. Positive IF detected in HeLa cells. Observed molecular weight by Western-blot: 43-50kd

## Validations



## Preparation

This antibody was obtained by immunization of DEK recombinant protein (Accession Number: XM\_024446544). Purification method: Antigen affinity purified.

HeLa cells were subjected to SDS PAGE followed by western blot with Catalog No:109886(DEK antibody) at dilution of 1:800

## Formulation

PBS with 0.02% sodium azide and 50% glycerol pH 7.3.

## Storage

Store at -20°C. DO NOT ALIQUOT

## Clonality

Polyclonal

## Ig Type

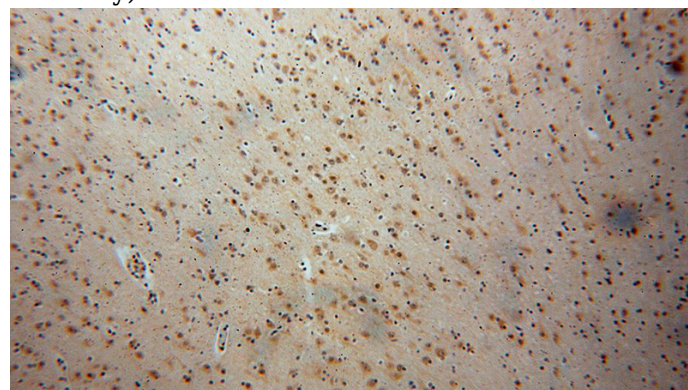
Rabbit IgG

## Applications

ELISA, WB, IHC, IF, IP

## Dilutions

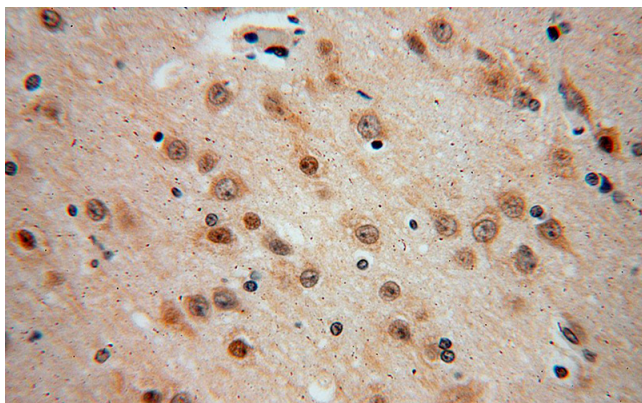
Recommended Dilution:



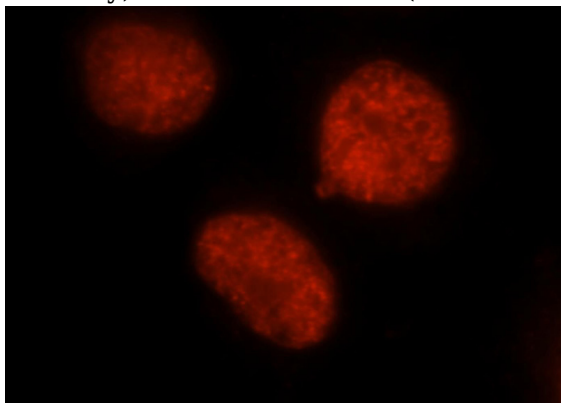
Immunohistochemical of paraffin-embedded human brain using Catalog No:109886(DEK antibody) at dilution of 1:100 (under 10x lens)

# DEK antibody

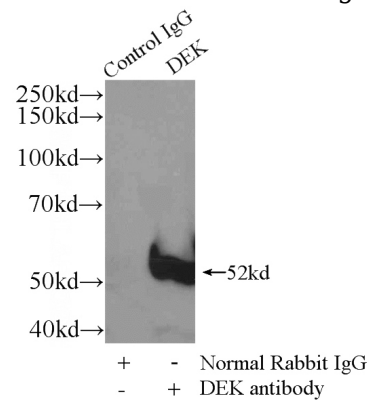
Catalog Number: 109886



Immunohistochemical of paraffin-embedded human brain using Catalog No:109886(DEK antibody) at dilution of 1:100 (under 40x lens)



Immunofluorescent analysis of HeLa cells, using DEK antibody Catalog No:109886 at 1:25 dilution and Rhodamine-labeled goat anti-rabbit IgG (red).



IP Result of anti-DEK (IP:Catalog No:109886, 4ug; Detection:Catalog No:109886 1:500) with HeLa cells lysate 1200ug.