

# Cytokeratin 19 antibody



Catalog Number: 109802

## Product name

Cytokeratin 19 antibody

## Specificity

Human, Mouse; other species not tested.

## Antibody description

Cytokeratin 19 Rabbit Polyclonal antibody. Positive IHC detected in human colon tissue, human appendix tissue, human breast cancer tissue, human endometrial cancer tissue, human liver cancer tissue, human liver tissue, human lung cancer tissue, human ovary tumor tissue, human pancreas cancer tissue, human pancreas tissue, human prostate cancer tissue, human prostate hyperplasia tissue, human skin tissue, human thyroid cancer tissue. Positive FC detected in MCF-7 cells. Positive WB detected in A431 cells, A549 cells, HepG2 cells, MCF7 cells, mouse brain tissue, mouse placenta tissue. Observed molecular weight by Western-blot: 44-50 kDa

## Preparation

This antibody was obtained by immunization of Cytokeratin 19 recombinant protein (Accession Number: NM\_002276). Purification method: Antigen affinity purified.

## Formulation

PBS with 0.1% sodium azide and 50% glycerol pH 7.3.

## Storage

Store at -20°C. DO NOT ALIQUOT

## Clonality

Polyclonal

## Ig Type

Rabbit IgG

## Applications

ELISA, WB, FC, IHC

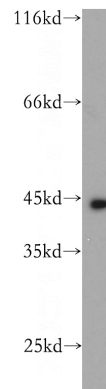
## Dilutions

Recommended Dilution:

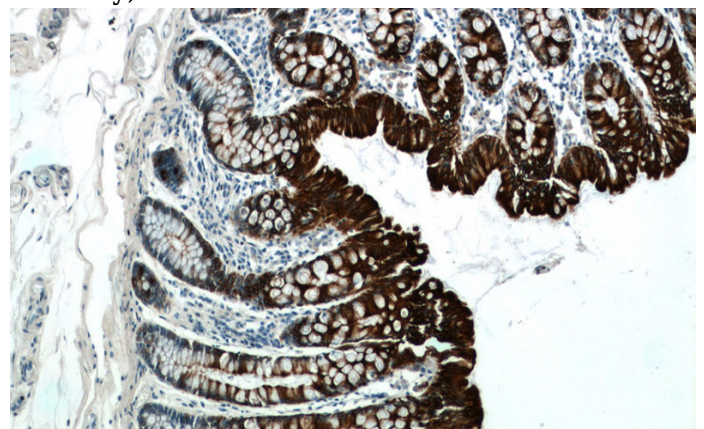
WB: 1:500-1:5000

IHC: 1:20-1:200

## Validations



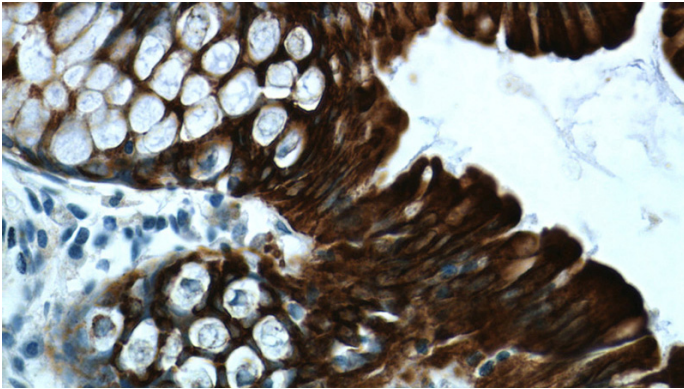
A431 cells were subjected to SDS PAGE followed by western blot with Catalog No:109802(KRT19 antibody) at dilution of 1:1500



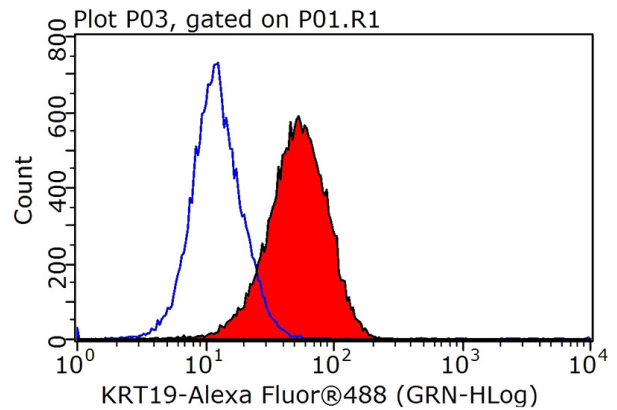
Immunohistochemistry of paraffin-embedded human colon tissue slide using Catalog No:109802(CK19 Antibody) at dilution of 1:200 (under 10x lens)

# Cytokeratin 19 antibody

Catalog Number: 109802



Immunohistochemistry of paraffin-embedded human colon tissue slide using Catalog No:109802(CK19 Antibody) at dilution of 1:200 (under 40x lens)



1X10<sup>6</sup> MCF-7 cells were stained with 0.2ug CK19 antibody (Catalog No:109802, red) and control antibody (blue). Fixed with 90% MeOH blocked with 3% BSA (30 min). Alexa Fluor 488-conjugated AffiniPure Goat Anti-Rabbit IgG(H+L) with dilution 1:1000.