

Cytokeratin 18 antibody



Catalog Number: 109800

Product name

Cytokeratin 18 antibody

Immunogen

[Human KRT18 Recombinant protein \(GST tag\)](#)

Specificity

Human, Mouse; other species not tested.

Antibody description

Cytokeratin 18 Rabbit Polyclonal antibody. Positive IF detected in HeLa cells, HepG2 cells, mouse olfactory epithelium tissue. Positive IHC detected in human breast cancer tissue, human cervical cancer tissue, human colon cancer tissue, human endometrial cancer tissue, human liver cancer tissue, human lung cancer tissue, human ovary tumor tissue, human pancreas cancer tissue, human prostate cancer tissue, human stomach cancer tissue. Positive FC detected in MCF-7 cells. Positive WB detected in A431 cells, K-562 cells. Positive IP detected in A431 cells. Observed molecular weight by Western-blot: 48 kDa

Preparation

This antibody was obtained by immunization of Cytokeratin 18 recombinant protein (Accession Number: NM_000224). Purification method: Antigen affinity purified.

Formulation

PBS with 0.1% sodium azide and 50% glycerol pH 7.3.

Storage

Store at -20°C. DO NOT ALIQUOT

Clonality

Polyclonal

Ig Type

Rabbit IgG

Applications

ELISA, WB, IP, IF, FC, IHC

Dilutions

Recommended Dilution:

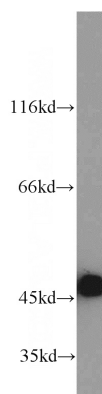
WB: 1:1000-1:10000

IP: 1:1000-1:10000

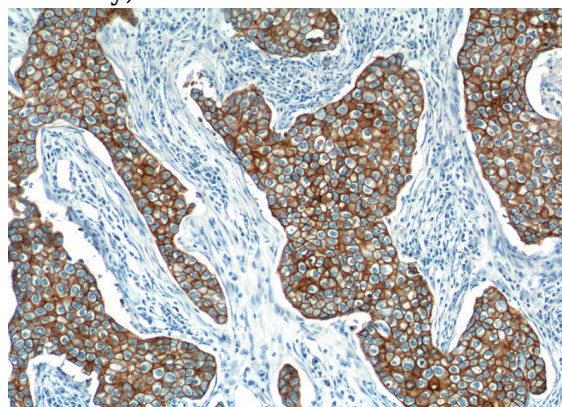
IHC: 1:50-1:500

IF: 1:20-1:200

Validations



A431 cells were subjected to SDS PAGE followed by western blot with Catalog No:109800(KRT18 antibody) at dilution of 1:2000

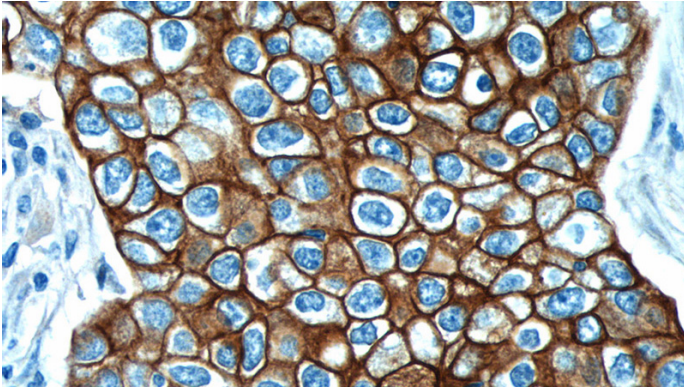


Immunohistochemistry of paraffin-embedded human breast cancer tissue slide using Catalog No:109800(KRT18 Antibody) at dilution of 1:1000

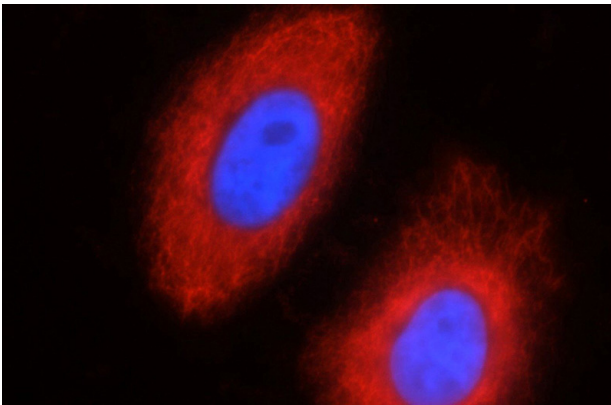
Cytokeratin 18 antibody

Catalog Number: 109800

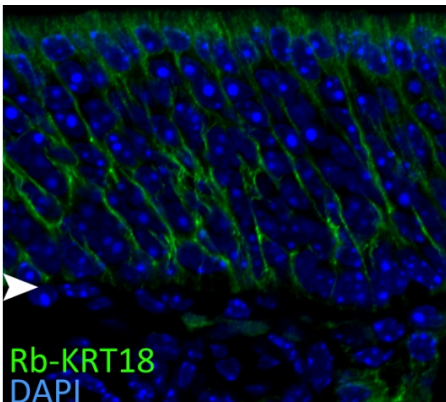
(under 10x lens).



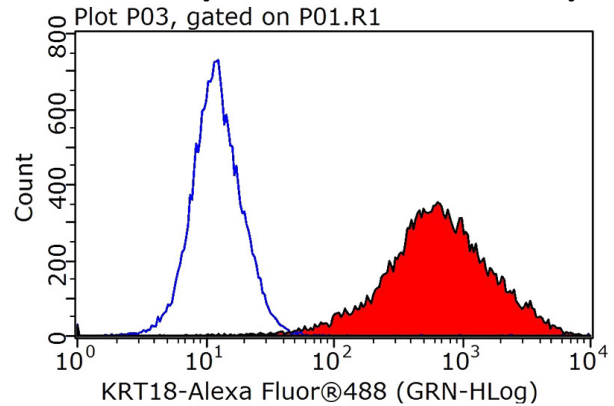
Immunohistochemistry of paraffin-embedded human breast cancer tissue slide using Catalog No:109800(KRT18 Antibody) at dilution of 1:1000 (under 40x lens).



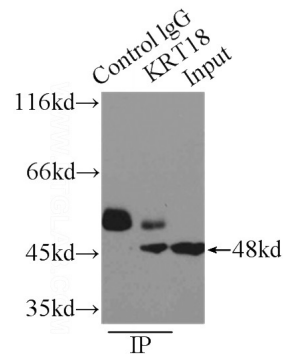
Immunofluorescent analysis of HeLa cells using Catalog No:109800(KRT18 Antibody) at dilution of 1:50 and Rhodamine-Goat anti-Rabbit IgG



IF result of CK18 antibody (Catalog No:109800, 1:50) with 1% PLP fixed the apical sustentacular cells of adult mouse olfactory epithelium. (Green: CK18; Blue: DAPI). Basal lamina is marked by an arrow head. By Brian Lin, Tufts University.



1X10⁶ MCF-7 cells were stained with 0.2ug KRT18 antibody (Catalog No:109800, red) and control antibody (blue). Fixed with 90% MeOH blocked with 3% BSA (30 min). Alexa Fluor 488-conjugated AffiniPure Goat Anti-Rabbit IgG(H+L) with dilution 1:1000.



IP Result of anti-KRT18 (IP:Catalog No:109800, 3ug; Detection:Catalog No:109800 1:2000) with A431 cells lysate 3300ug.