

CUL2 antibody

Catalog Number: 109742

Product name

CUL2 antibody

WB: 1:200-1:1000

IP: 1:200-1:1000

Specificity

Human; other species not tested.

IHC: 1:20-1:200

IF: 1:10-1:100

Antibody description

CUL2 Rabbit Polyclonal antibody. Positive WB detected in HeLa cells. Positive IP detected in HeLa cells. Positive IHC detected in human prostate cancer tissue, human kidney tissue, human testis tissue. Positive IF detected in HepG2 cells. Observed molecular weight by Western-blot: 87 kDa

Preparation

This antibody was obtained by immunization of CUL2 recombinant protein (Accession Number: NM_003591). Purification method: Antigen affinity purified.

Formulation

PBS with 0.1% sodium azide and 50% glycerol pH 7.3.

Storage

Store at -20°C. DO NOT ALIQUOT

Clonality

Polyclonal

Ig Type

Rabbit IgG

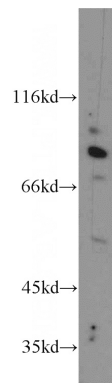
Applications

ELISA, WB, IHC, IF, IP

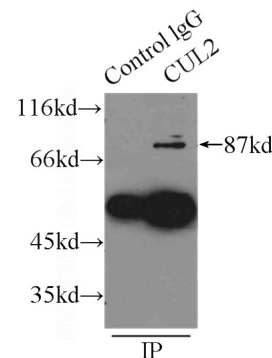
Dilutions

Recommended Dilution:

Validations



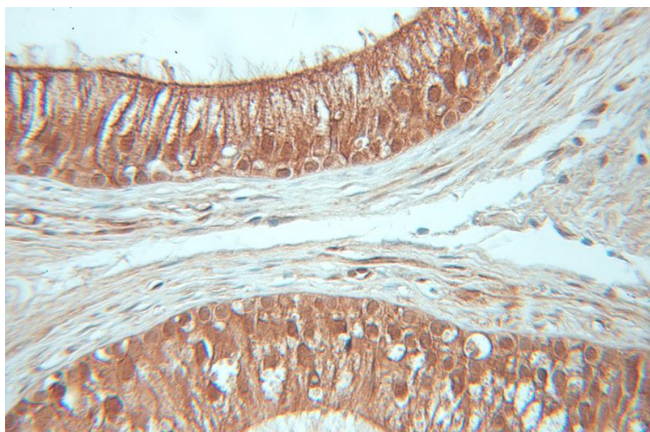
HeLa cells were subjected to SDS PAGE followed by western blot with Catalog No:109742(CUL2 antibody) at dilution of 1:100



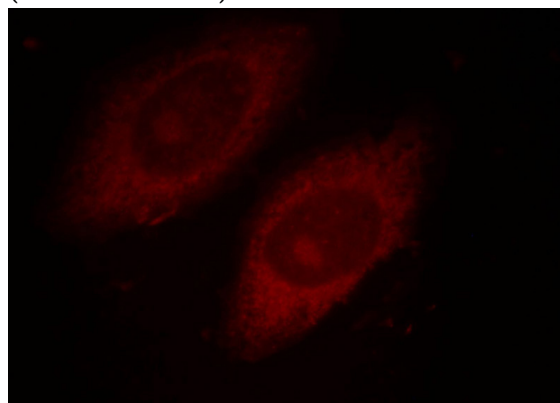
IP Result of anti-CUL2 (IP:Catalog No:109742, 4ug; Detection:Catalog No:109742 1:200) with HeLa cells lysate 2500ug.

CUL2 antibody

Catalog Number: 109742



(under 40x lens)



Immunofluorescent analysis of HepG2 cells, using CUL2 antibody Catalog No:109742 at 1:25 dilution and Rhodamine-labeled goat anti-rabbit IgG (red).

Immunohistochemical of paraffin-embedded human prostate cancer using Catalog No:109742(CUL2 antibody) at dilution of 1:50