

# CTP synthase antibody



Catalog Number: 109728

## General Information

### Product name:

CTP synthase antibody

### Immunogen:

### Applications:

ELISA, WB, IF, FC, IP, IHC

### Specificity:

Human, Mouse, Rat; other species not tested.

### Antibody description:

CTP synthase Rabbit Polyclonal antibody. Positive IF detected in HepG2 cells. Positive IHC detected in human liver cancer tissue. Positive FC detected in HepG2 cells. Positive IP detected in HeLa cells. Positive WB detected in HeLa cells. Observed molecular weight by Western-blot: 67 kDa

## Properties

### Preparation:

This antibody was obtained by immunization of CTP synthase recombinant protein (Accession Number: BC009408). Purification method: Antigen affinity purified.

### Formulation:

PBS with 0.02% sodium azide and 50% glycerol pH 7.3.

### Storage:

Store at -20°C. DO NOT ALIQUOT

### Clonality:

Polyclonal

**Ig Type:** Rabbit IgG

## Applications

Recommended Dilution:

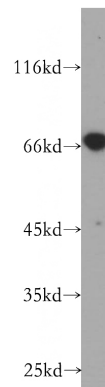
WB: 1:500-1:5000

IP: 1:200-1:2000

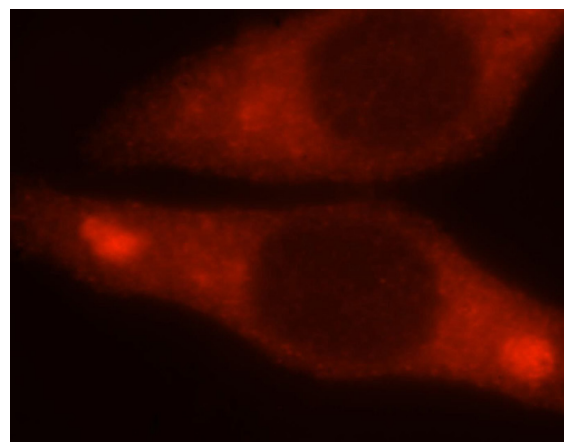
IHC: 1:50-1:500

IF: 1:10-1:100

## Validations



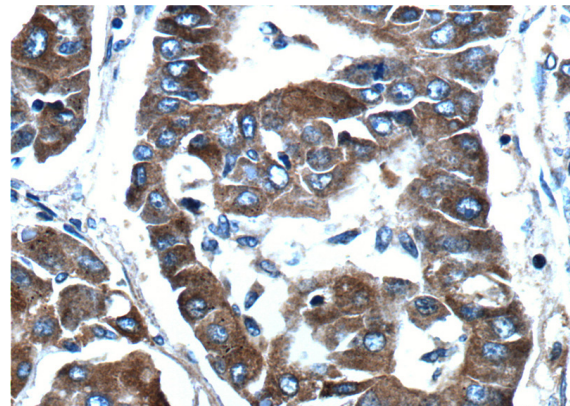
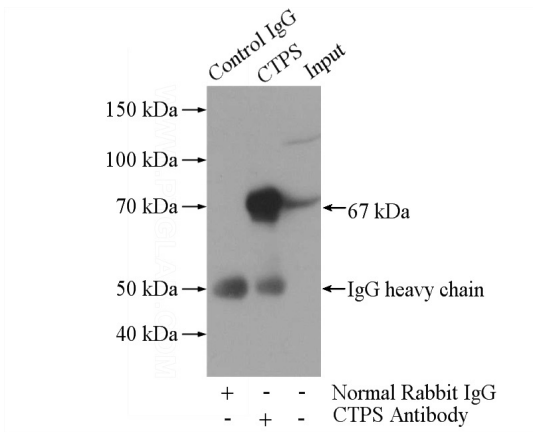
HeLa cells were subjected to SDS PAGE followed by western blot with Catalog No:109728(CTPS antibody) at dilution of 1:500



Immunofluorescent analysis of HepG2 cells, using CTPS antibody Catalog No:109728 at 1:25 dilution and Rhodamine-labeled goat anti-rabbit IgG (red).

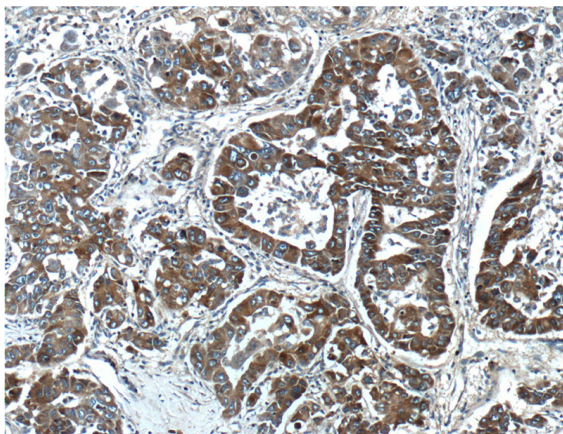
# CTP synthase antibody

Catalog Number: 109728

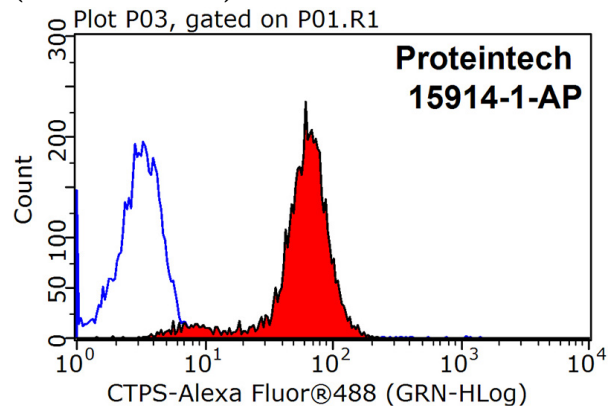


Immunohistochemistry of paraffin-embedded human liver cancer tissue slide using Catalog No:109728(CTPS Antibody) at dilution of 1:100 (under 40x lens).

IP Result of anti-CTPS (IP:Catalog No:109728, 4ug; Detection:Catalog No:109728 1:500) with HeLa cells lysate 1200ug.



Immunohistochemistry of paraffin-embedded human liver cancer tissue slide using Catalog No:109728(CTPS Antibody) at dilution of 1:100 (under 10x lens).



1X10<sup>6</sup> HepG2 cells were stained with 0.2ug CTPS antibody (Catalog No:109728, red) and control antibody (blue). Fixed with 90% MeOH blocked with 3% BSA (30 min). Alexa Fluor 488-conjugated AffiniPure Goat Anti-Rabbit IgG(H+L) with dilution 1:1500.