

# CYP1A2-Specific antibody



Catalog Number: 109684

## Product name

CYP1A2-Specific antibody

IP: 1:200-1:1000

IHC: 1:20-1:200

## Specificity

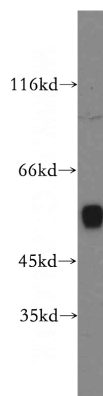
Human, Mouse, Rat; other species not tested.

IF: 1:10-1:100

## Antibody description

CYP1A2-Specific Rabbit Polyclonal antibody. Positive WB detected in mouse liver tissue. Positive IP detected in mouse liver tissue. Positive IHC detected in human liver tissue. Positive IF detected in HeLa cells. Positive FC detected in HeLa cells. Observed molecular weight by Western-blot: 58 kDa

## Validations



## Preparation

This antibody was obtained by immunization of Peptide (Accession Number: NM\_000761). Purification method: Antigen affinity purified.

mouse liver tissue were subjected to SDS PAGE followed by western blot with Catalog No:109684(CYP1A2-Specific antibody) at dilution of 1:1000

## Formulation

PBS with 0.02% sodium azide and 50% glycerol pH 7.3.

## Storage

Store at -20°C. DO NOT ALIQUOT

## Clonality

Polyclonal

## Ig Type

Rabbit IgG

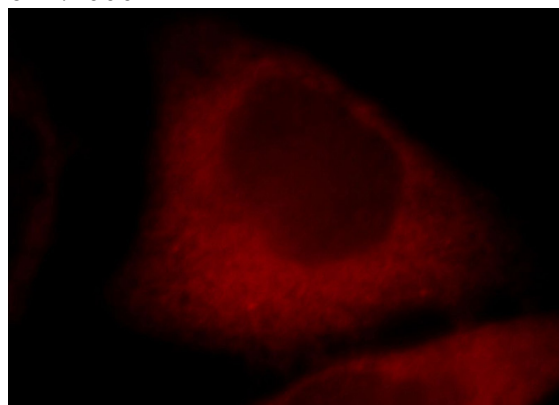
## Applications

ELISA, WB, IF, FC, IP, IHC

## Dilutions

Recommended Dilution:

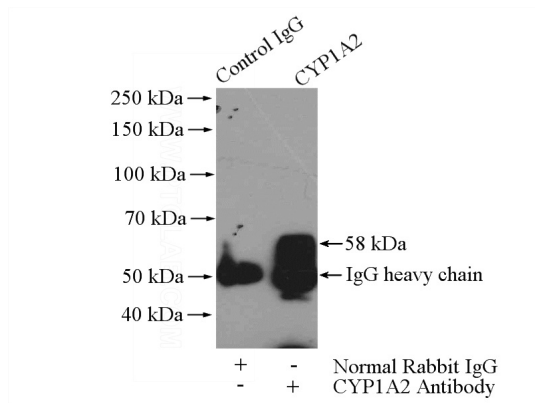
WB: 1:500-1:5000



Immunofluorescent analysis of HeLa cells, using CYP1A2 antibody Catalog No:109684 at 1:25 dilution and Rhodamine-labeled goat anti-rabbit

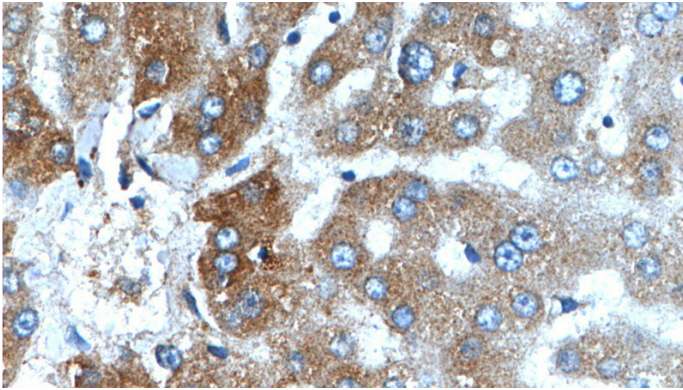
# CYP1A2-Specific antibody

Catalog Number: 109684

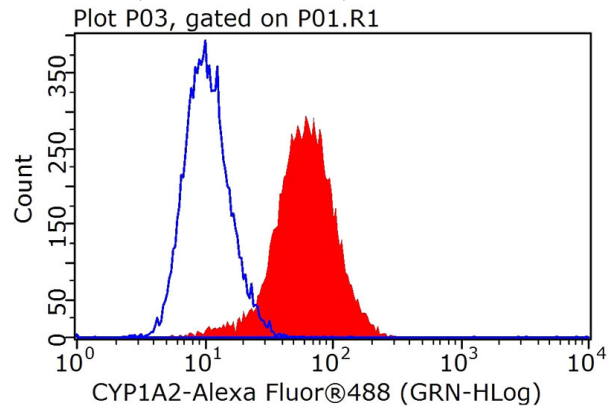


IgG (red).

IP Result of anti-CYP1A2-Specific (IP:Catalog No:109684, 4ug; Detection:Catalog No:109684 1:300) with mouse liver tissue lysate 4000ug.



Immunohistochemistry of paraffin-embedded human liver tissue slide using Catalog No:109684(CYP1A2-Specific Antibody) at dilution of 1:200 (under 40x lens).



$1 \times 10^6$  HeLa cells were stained with .5ug CYP1A2-Specific antibody (Catalog No:109684, red) and control antibody (blue). Fixed with 4% PFA blocked with 3% BSA (30 min). FITC-Goat anti-Rabbit IgG with dilution 1:100.