

Cyclin H antibody



Catalog Number: 109668

Product name

Cyclin H antibody

Specificity

Human, Mouse, Rat; other species not tested.

Antibody description

Cyclin H Rabbit Polyclonal antibody. Positive IP detected in HeLa cells. Positive WB detected in A375 cells, A431 cells, HeLa cells, Jurkat cells, K-562 cells, mouse brain tissue, NIH/3T3 cells. Positive FC detected in SH-SY5Y cells. Positive IHC detected in human ovary tumor tissue. Positive IF detected in SH-SY5Y cells. Observed molecular weight by Western-blot: 38 kDa

Preparation

This antibody was obtained by immunization of Cyclin H recombinant protein (Accession Number: NM_001239). Purification method: Antigen affinity purified.

Formulation

PBS with 0.1% sodium azide and 50% glycerol pH 7.3.

Storage

Store at -20°C. DO NOT ALIQUOT

Clonality

Polyclonal

Ig Type

Rabbit IgG

Applications

ELISA, WB, IHC, IF, FC, IP

Dilutions

Recommended Dilution:

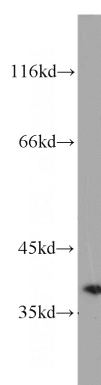
WB: 1:500-1:5000

IP: 1:500-1:5000

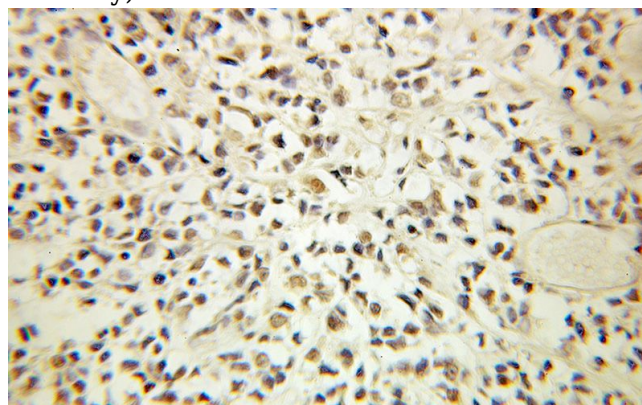
IHC: 1:20-1:200

IF: 1:20-1:200

Validations



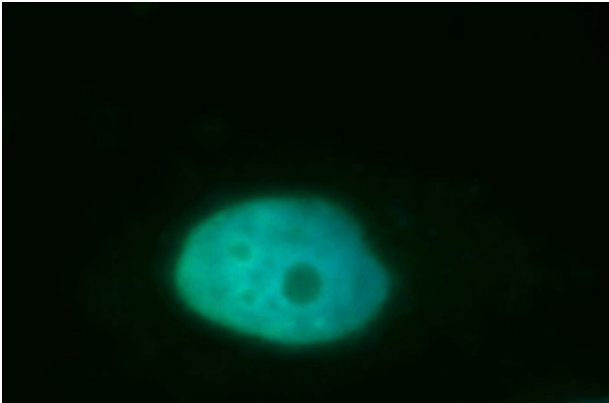
A375 cells were subjected to SDS PAGE followed by western blot with Catalog No:109668(CCNH antibody) at dilution of 1:1000



Immunohistochemical of paraffin-embedded human ovary tumor using Catalog No:109668(CCNH antibody) at dilution of 1:100 (under 10x lens)

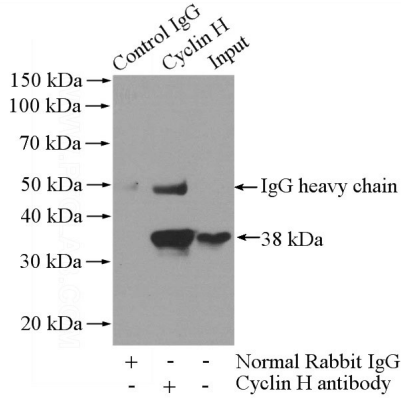
Cyclin H antibody

Catalog Number: 109668

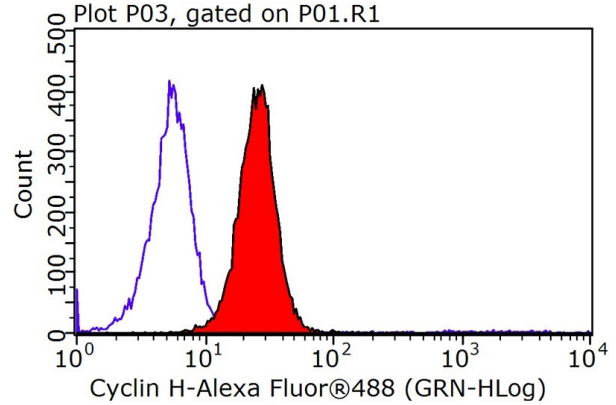


Immunofluorescent analysis of SH-SY5Y cells, using CCNH antibody Catalog No:109668 at 1:50 dilution and FITC-labeled donkey anti-rabbit IgG(green). Blue pseudocolor = DAPI (fluorescent

DNA dye).



IP Result of anti-CCNH (IP:Catalog No:109668, 4ug; Detection:Catalog No:109668 1:1000) with HeLa cells lysate 1200ug.



1X10⁶ SH-SY5Y cells were stained with 0.2ug CCNH antibody (Catalog No:109668, red) and control antibody (blue). Fixed with 90% MeOH blocked with 3% BSA (30 min). Alexa Fluor 488-conjugated AffiniPure Goat Anti-Rabbit IgG(H+L) with dilution 1:100.