

Cyclin B1 antibody

Catalog Number: 109662

Product name

Cyclin B1 antibody

IP: 1:200-1:2000

IHC: 1:20-1:200

Specificity

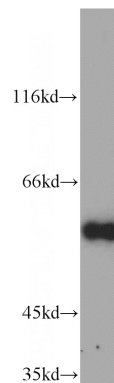
Human, Mouse, Rat; other species not tested.

IF: 1:20-1:200

Antibody description

Cyclin B1 Rabbit Polyclonal antibody. Positive WB detected in HepG2 cells, HeLa cells, Jurkat cells, K-562 cells, PC-3 cells. Positive IP detected in HeLa cells. Positive IF detected in HeLa cells. Positive IHC detected in human prostate cancer tissue, human breast cancer tissue. Observed molecular weight by Western-blot: 55-60 kDa

Validations



Preparation

This antibody was obtained by immunization of Peptide (Accession Number: NM_031966). Purification method: Antigen affinity purified.

HepG2 cells were subjected to SDS PAGE followed by western blot with Catalog No:109662(CCNB1 antibody) at dilution of 1:500

Formulation

PBS with 0.02% sodium azide and 50% glycerol pH 7.3.

Storage

Store at -20°C. DO NOT ALIQUOT

Clonality

Polyclonal

Ig Type

Rabbit IgG

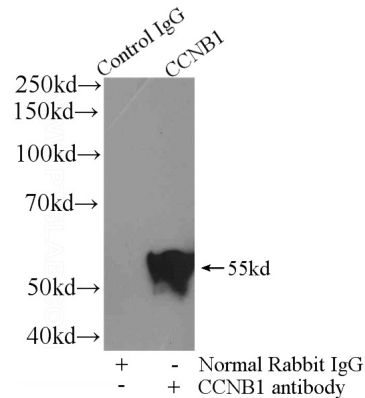
Applications

ELISA, WB, IP, IF, IHC

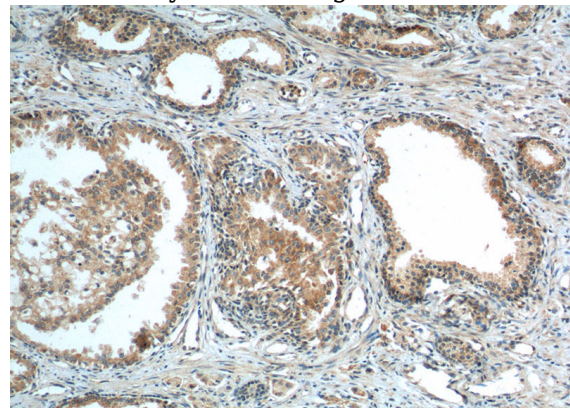
Dilutions

Recommended Dilution:

WB: 1:500-1:5000



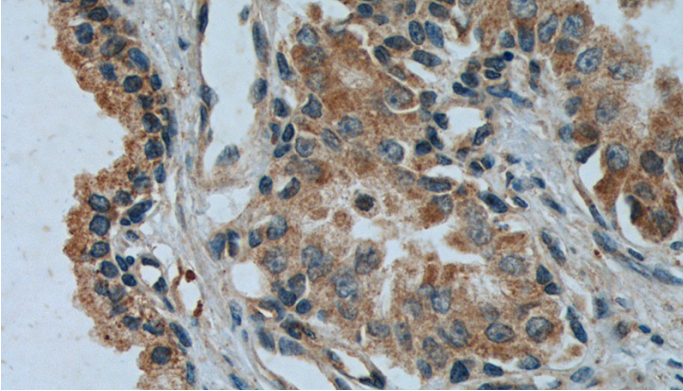
IP Result of anti-Cyclin B1 (IP:Catalog No:109662, 4ug; Detection:Catalog No:109662 1:500) with HeLa cells lysate 1200ug.



Cyclin B1 antibody

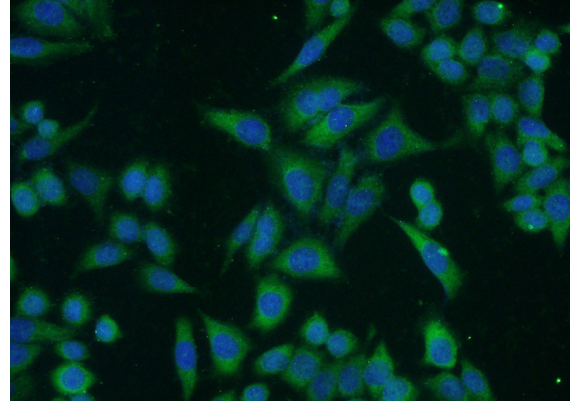
Catalog Number: 109662

Immunohistochemistry of paraffin-embedded human prostate cancer tissue slide using Catalog No:109662(Cyclin B1 Antibody) at dilution of 1:50 (under 10x lens). heat mediated antigen retrieved with Tris-EDTA buffer(pH9).



Immunohistochemistry of paraffin-embedded human prostate cancer tissue slide using Catalog

No:109662(Cyclin B1 Antibody) at dilution of 1:50 (under 40x lens). heat mediated antigen retrieved with Tris-EDTA buffer(pH9).



Immunofluorescent analysis of HeLa cells using Catalog No:109662(Cyclin B1 Antibody) at dilution of 1:50 and Alexa Fluor 488-conjugated AffiniPure Goat Anti-Rabbit IgG(H+L)