

CXorf26 antibody

Catalog Number: 109650

Product name

CXorf26 antibody

IHC: 1:20-1:200

IF: 1:20-1:200

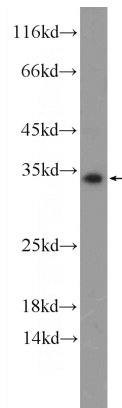
Specificity

Human, Mouse; other species not tested.

Validations

Antibody description

CXorf26 Rabbit Polyclonal antibody. Positive WB detected in A549 cells, HeLa cells, mouse lung tissue. Positive IHC detected in human testis tissue, human kidney tissue. Positive IF detected in HeLa cells. Observed molecular weight by Western-blot: 26-35 kDa



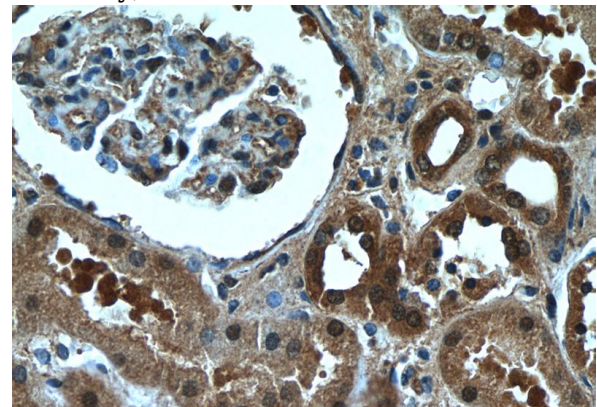
Preparation

This antibody was obtained by immunization of CXorf26 recombinant protein (Accession Number: NM_016500). Purification method: Antigen affinity purified.

A549 cells were subjected to SDS PAGE followed by western blot with Catalog No:109650(CXorf26 Antibody) at dilution of 1:300

Formulation

PBS with 0.1% sodium azide and 50% glycerol pH 7.3.



Storage

Store at -20°C. DO NOT ALIQUOT

Clonality

Polyclonal

Immunohistochemistry of paraffin-embedded human kidney tissue slide using Catalog No:109650(CXorf26 Antibody) at dilution of 1:50 (under 40x lens)

Ig Type

Rabbit IgG

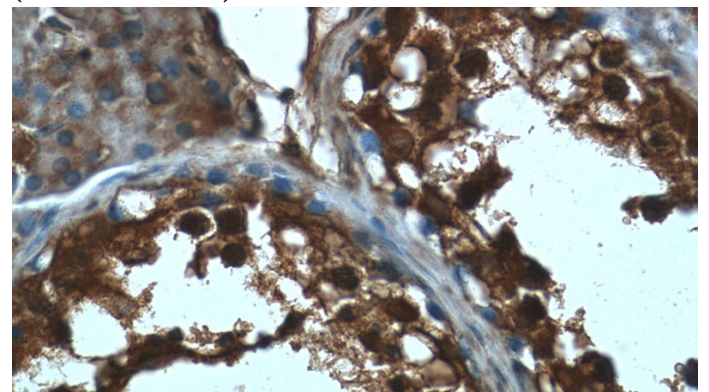
Applications

ELISA, WB, IF, IHC

Dilutions

Recommended Dilution:

WB: 1:200-1:1000

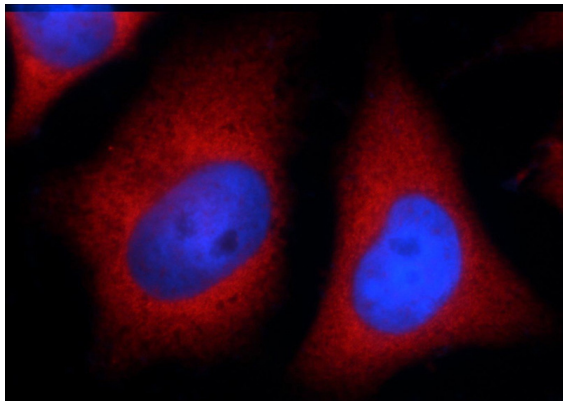


Immunohistochemistry of paraffin-embedded

CXorf26 antibody

Catalog Number: 109650

human testis tissue slide using Catalog No:109650(CXorf26 Antibody) at dilution of 1:50 (under 40x lens)



Immunofluorescent analysis of HeLa cells using Catalog No:109650(CXorf26 Antibody) at dilution of 1:50 and Rhodamine-Goat anti-Rabbit IgG