

CXorf22 antibody

Catalog Number: 109649

Product name

CXorf22 antibody

Specificity

Human, Mouse; other species not tested.

Antibody description

CXorf22 Rabbit Polyclonal antibody. Positive WB detected in mouse lung tissue. Positive IHC detected in human lung tissue, human spleen tissue.

Preparation

This antibody was obtained by immunization of CXorf22 recombinant protein (Accession Number: BC027936). Purification method: Antigen affinity purified.

Formulation

PBS with 0.02% sodium azide and 50% glycerol pH 7.3.

Storage

Store at -20°C. DO NOT ALIQUOT

Clonality

Polyclonal

Ig Type

Rabbit IgG

Applications

ELISA, IHC, WB

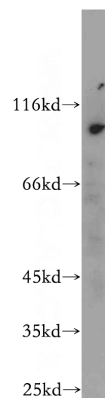
Dilutions

Recommended Dilution:

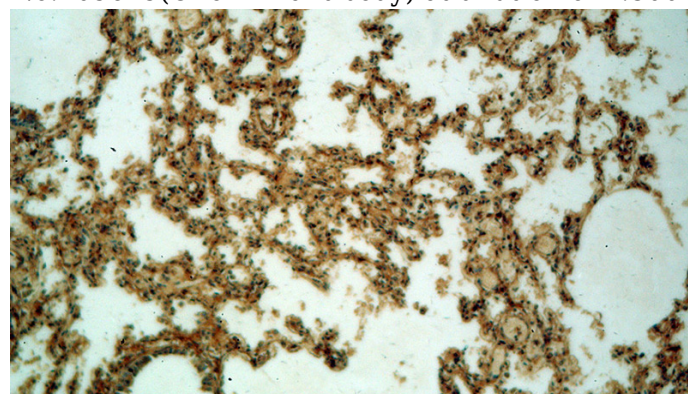
WB: 1:200-1:2000

IHC: 1:20-1:200

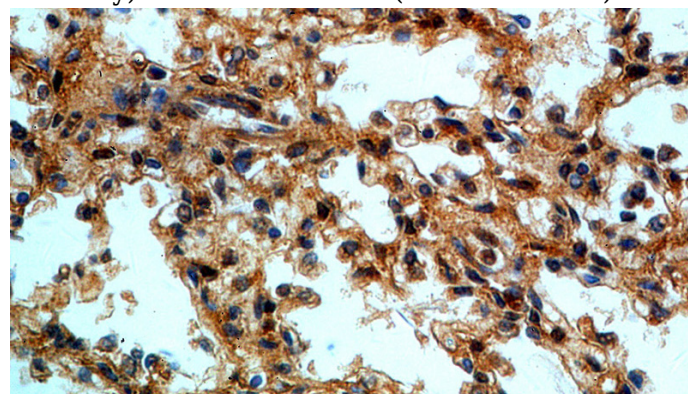
Validations



mouse lung tissue were subjected to SDS PAGE followed by western blot with Catalog No:109649(CXorf22 antibody) at dilution of 1:500



Immunohistochemical of paraffin-embedded human lung using Catalog No:109649(CXorf22 antibody) at dilution of 1:50 (under 10x lens)



Immunohistochemical of paraffin-embedded human lung using Catalog No:109649(CXorf22 antibody) at dilution of 1:50 (under 40x lens)