

CXCL14 antibody



Catalog Number: 109639

General Information

Product name:

CXCL14 antibody

Immunogen:

Applications:

ELISA, WB, IHC

Specificity:

Human; other species not tested.

Antibody description:

CXCL14 Rabbit Polyclonal antibody. Positive WB detected in MCF-7 cells. Positive IHC detected in human liver tissue, human breast cancer tissue, human colon cancer tissue, human stomach tissue. Observed molecular weight by Western-blot: 14 kDa

Properties

Preparation:

This antibody was obtained by immunization of CXCL14 recombinant protein (Accession Number: BC003513). Purification method: Antigen affinity purified.

Formulation:

PBS with 0.1% sodium azide and 50% glycerol pH 7.3.

Storage:

Store at -20°C. DO NOT ALIQUOT

Clonality:

Polyclonal

Ig Type:Rabbit IgG

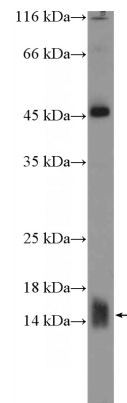
Applications

Recommended Dilution:

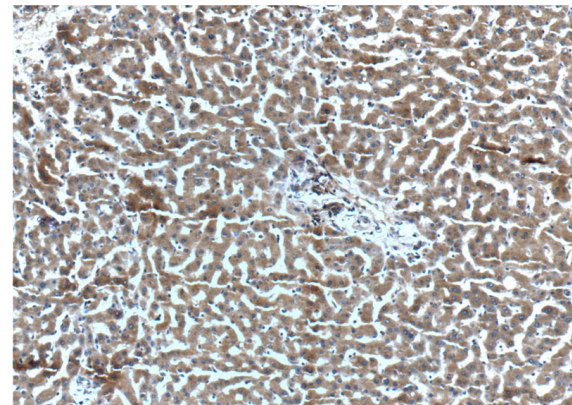
WB: 1:200-1:1000

IHC: 1:50-1:500

Validations



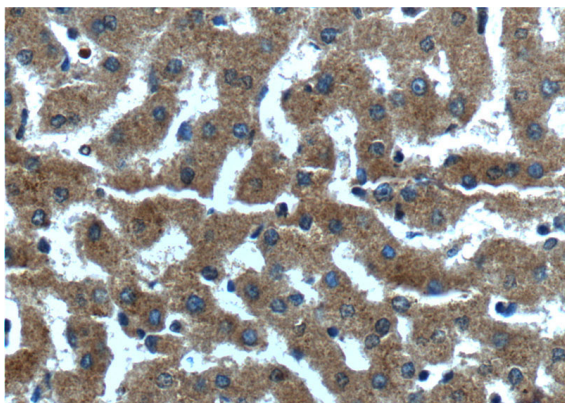
MCF-7 cells were subjected to SDS PAGE followed by western blot with Catalog No:109639(CXCL14 Antibody) at dilution of 1:300



Immunohistochemistry of paraffin-embedded human liver tissue slide using Catalog No:109639(CXCL14 Antibody) at dilution of 1:200 (under 10x lens).

CXCL14 antibody

Catalog Number: 109639



Immunohistochemistry of paraffin-embedded human liver tissue slide using Catalog No:109639(CXCL14 Antibody) at dilution of 1:200 (under 40x lens).