

# CXCL11 antibody



Catalog Number: 109636

---

## Product name

CXCL11 antibody

## Specificity

human; other species not tested.

## Antibody description

CXCL11 Rabbit Polyclonal antibody. Positive WB detected in K-562 cells. Observed molecular weight by Western-blot: 10 kDa

## Preparation

This antibody was obtained by immunization of CXCL11 recombinant protein (Accession Number: NM\_005409). Purification method: Antigen affinity purified.

## Formulation

PBS with 0.1% sodium azide and 50% glycerol pH 7.3.

## Storage

Store at -20°C. DO NOT ALIQUOT

## Clonality

Polyclonal

## Ig Type

Rabbit IgG

## Applications

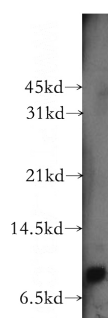
ELISA, WB

## Dilutions

Recommended Dilution:

WB: 1:200-1:1000

## Validations



K-562 cells were subjected to SDS PAGE followed by western blot with Catalog No:109636(CXCL11 antibody) at dilution of 1:300