

CRP antibody

Catalog Number: 109578

Product name

CRP antibody

Specificity

Human, Mouse; other species not tested.

Antibody description

CRP Rabbit Polyclonal antibody. Positive IHC detected in human liver tissue. Positive WB detected in serum from mouse injected with bacteria. Observed molecular weight by Western-blot: 25 kDa

Preparation

This antibody was obtained by immunization of CRP recombinant protein (Accession Number: NM_000567). Purification method: Antigen Affinity purified.

Formulation

PBS with 0.02% sodium azide and 50% glycerol pH 7.3.

Storage

Store at -20°C. DO NOT ALIQUOT

Clonality

Polyclonal

Ig Type

Rabbit IgG

Applications

ELISA, WB, IHC

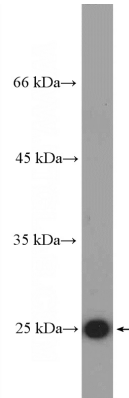
Dilutions

Recommended Dilution:

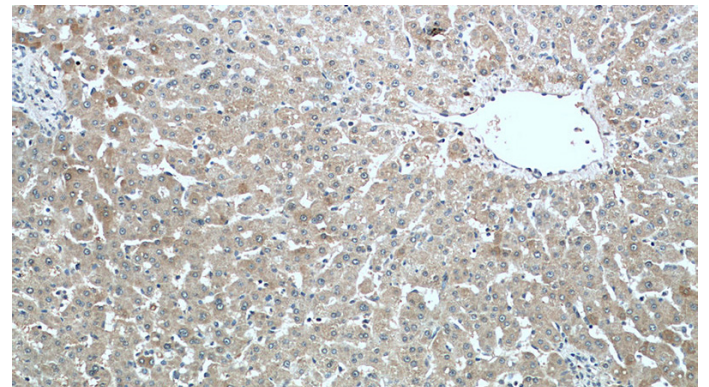
WB: 1:200-1:2000

IHC: 1:50-1:500

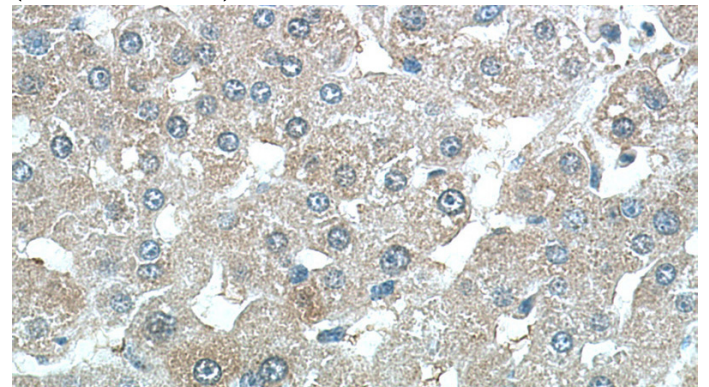
Validations



Serum from mouse injected with bacteria were subjected to SDS PAGE followed by western blot with Catalog No:109578(CRP Antibody) at dilution of 1:600



Immunohistochemistry of paraffin-embedded human liver tissue slide using Catalog No:109578(CRP Antibody) at dilution of 1:200 (under 10x lens).



Immunohistochemistry of paraffin-embedded human liver tissue slide using Catalog

CRP antibody



Catalog Number: 109578

No:109578(CRP Antibody) at dilution of 1:200 (under 40x lens).