

CRH/CRF antibody



Catalog Number: 109556

Product name

CRH/CRF antibody

Specificity

Human, Mouse, Rat; other species not tested.

Antibody description

CRH/CRF Rabbit Polyclonal antibody. Positive IHC detected in human pancreas tissue, human pancreas cancer tissue. Positive WB detected in human brain tissue, rat brain tissue. Observed molecular weight by Western-blot: 35 kDa

Preparation

This antibody was obtained by immunization of CRH/CRF recombinant protein (Accession Number: XM_017013091). Purification method: Antigen affinity purified.

Formulation

PBS with 0.1% sodium azide and 50% glycerol pH 7.3.

Storage

Store at -20°C. DO NOT ALIQUOT

Clonality

Polyclonal

Ig Type

Rabbit IgG

Applications

ELISA, WB, IHC

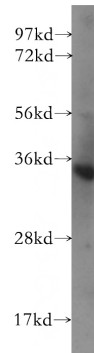
Dilutions

Recommended Dilution:

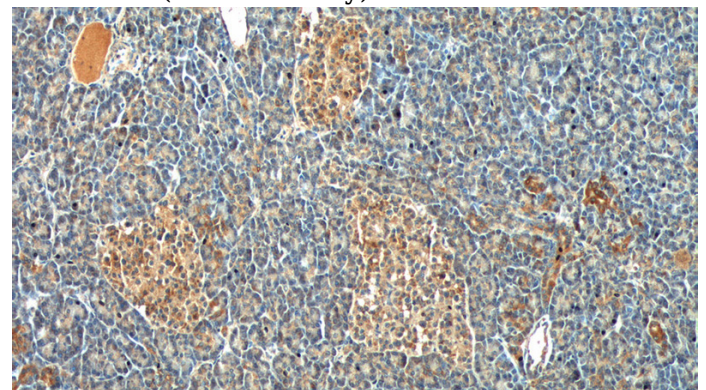
WB: 1:200-1:2000

IHC: 1:50-1:500

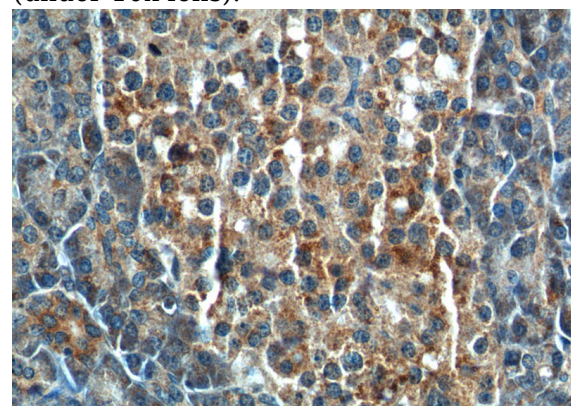
Validations



human brain tissue were subjected to SDS PAGE followed by western blot with Catalog No:109556(CRH antibody) at dilution of 1:400



Immunohistochemistry of paraffin-embedded human pancreas tissue slide using Catalog No:109556(CRH Antibody) at dilution of 1:200 (under 10x lens).



Immunohistochemistry of paraffin-embedded human pancreas tissue slide using Catalog No:109556(CRH Antibody) at dilution of 1:200

CRH/CRF antibody



Catalog Number: 109556

(under 40x lens).