

# CREB3 antibody

Catalog Number: 109546

## Product name

CREB3 antibody

IP: 1:200-1:2000

IHC: 1:20-1:200

## Specificity

Human; other species not tested.

## Antibody description

CREB3 Rabbit Polyclonal antibody. Positive IHC detected in human prostate cancer tissue. Positive IP detected in PC-3 cells. Positive WB detected in PC-3 cells, Jurkat cells. Observed molecular weight by Western-blot: 40-64kd

## Preparation

This antibody was obtained by immunization of CREB3 recombinant protein (Accession Number: NM\_006368). Purification method: Antigen affinity purified.

## Formulation

PBS with 0.02% sodium azide and 50% glycerol pH 7.3.

## Storage

Store at -20°C. DO NOT ALIQUOT

## Clonality

Polyclonal

## Ig Type

Rabbit IgG

## Applications

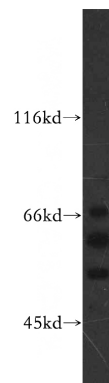
ELISA, WB, IHC, IP

## Dilutions

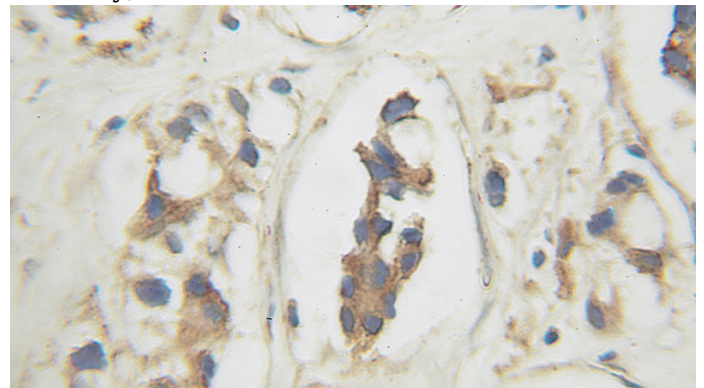
Recommended Dilution:

WB: 1:200-1:2000

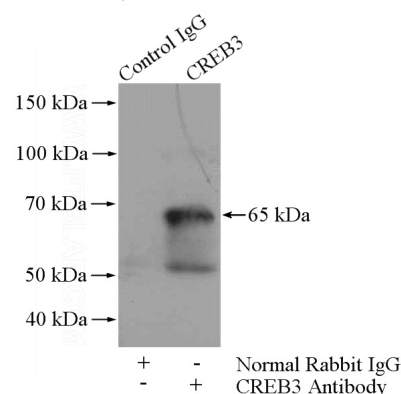
## Validations



PC-3 cells were subjected to SDS PAGE followed by western blot with Catalog No:109546(CREB3 antibody) at dilution of 1:300



Immunohistochemical of paraffin-embedded human prostate cancer using Catalog No:109546(CREB3 antibody) at dilution of 1:100 (under 25x lens)



IP Result of anti-CREB3 (IP:Catalog No:109546,

# CREB3 antibody



Catalog Number: 109546

---

4ug; Detection:Catalog No:109546 1:500) with PC-3 cells lysate 1800ug.