

# CRBN antibody



Catalog Number: 109539

## Product name

CRBN antibody

WB: 1:200-1:2000

IHC: 1:20-1:200

## Specificity

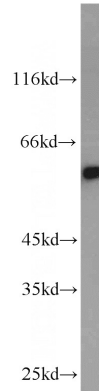
Human, Mouse, Rat; other species not tested.

IF: 1:20-1:200

## Antibody description

CRBN Rabbit Polyclonal antibody. Positive IHC detected in human cervical cancer tissue. Positive IF detected in COLO 320 cells, A375 cells. Positive WB detected in mouse heart tissue, A375 cells, COLO 320 cells, human brain tissue, human heart tissue, mouse liver tissue. Observed molecular weight by Western-blot: 53 kDa

## Validations



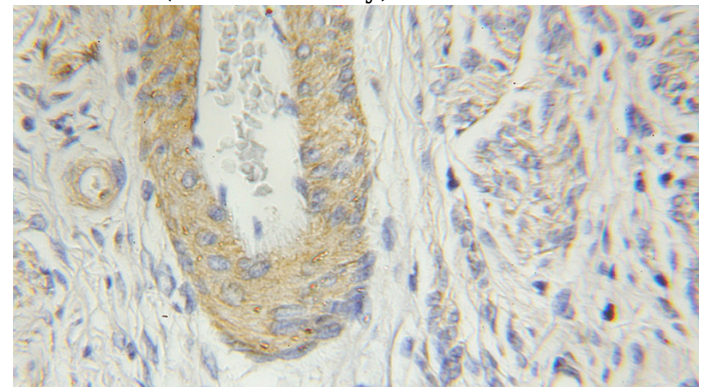
## Preparation

This antibody was obtained by immunization of CRBN recombinant protein (Accession Number: NM\_016302). Purification method: Antigen affinity purified.

mouse heart tissue were subjected to SDS PAGE followed by western blot with Catalog No:109539(CRBN antibody) at dilution of 1:1000

## Formulation

PBS with 0.1% sodium azide and 50% glycerol pH 7.3.



## Storage

Store at -20°C. DO NOT ALIQUOT

## Clonality

Polyclonal

Immunohistochemical of paraffin-embedded human cervical cancer using Catalog No:109539(CRBN antibody) at dilution of 1:50 (under 10x lens)

## Ig Type

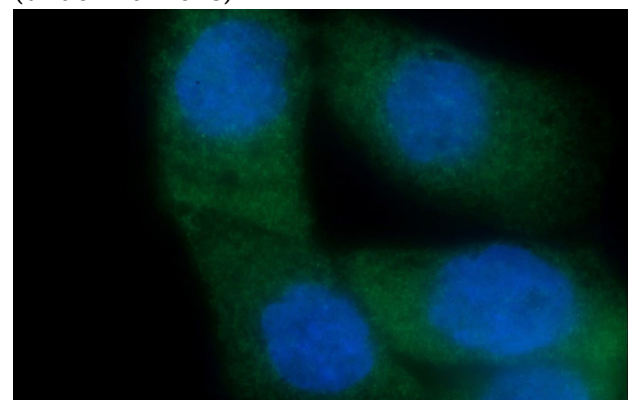
Rabbit IgG

## Applications

ELISA, WB, IHC, IF

## Dilutions

Recommended Dilution:



# CRBN antibody



Catalog Number: 109539

---

Immunofluorescent analysis of COLO 320 cells using Catalog No:109539(CRBN Antibody) at

dilution of 1:50 and Alexa Fluor 488-conjugated AffiniPure Goat Anti-Rabbit IgG(H+L)