

CRAT antibody

Catalog Number: 109538

Product name

CRAT antibody

Specificity

Human, Mouse, Rat; other species not tested.

Antibody description

CRAT Rabbit Polyclonal antibody. Positive WB detected in human heart tissue, mouse skeletal muscle tissue. Positive IP detected in mouse skeletal muscle tissue. Observed molecular weight by Western-blot: 55-68 kDa

Preparation

This antibody was obtained by immunization of CRAT recombinant protein (Accession Number: NM_144782). Purification method: Antigen affinity purified.

Formulation

PBS with 0.02% sodium azide and 50% glycerol pH 7.3.

Storage

Store at -20°C. DO NOT ALIQUOT

Clonality

Polyclonal

Ig Type

Rabbit IgG

Applications

ELISA, WB, IP

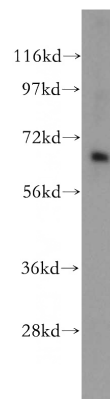
Dilutions

Recommended Dilution:

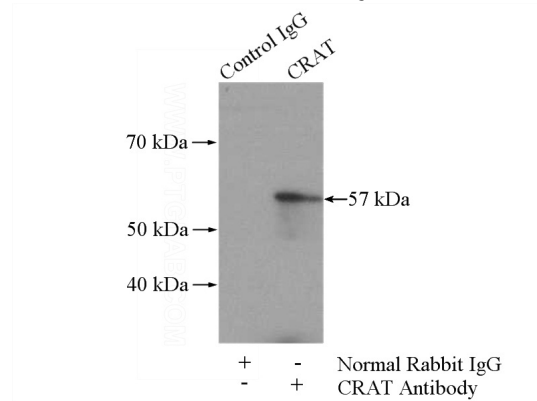
WB: 1:200-1:2000

IP: 1:200-1:1000

Validations



human heart tissue were subjected to SDS PAGE followed by western blot with Catalog No:109538(CRAT antibody) at dilution of 1:300



IP Result of anti-CRAT (IP:Catalog No:109538, 4ug; Detection:Catalog No:109538 1:300) with mouse skeletal muscle tissue lysate 3600ug.