

Connexin-26 antibody



Catalog Number: 109451

Product name

Connexin-26 antibody

Specificity

Human, Mouse, Rat; other species not tested.

Antibody description

Connexin-26 Rabbit Polyclonal antibody. Positive WB detected in human brain tissue. Positive IHC detected in human colon cancer tissue. Observed molecular weight by Western-blot: 26 kDa

Preparation

This antibody was obtained by immunization of Peptide (Accession Number: XM_011535049). Purification method: Antigen affinity purified.

Formulation

PBS with 0.1% sodium azide and 50% glycerol pH 7.3.

Storage

Store at -20°C. DO NOT ALIQUOT

Clonality

Polyclonal

Ig Type

Rabbit IgG

Applications

ELISA, WB, IHC

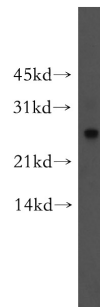
Dilutions

Recommended Dilution:

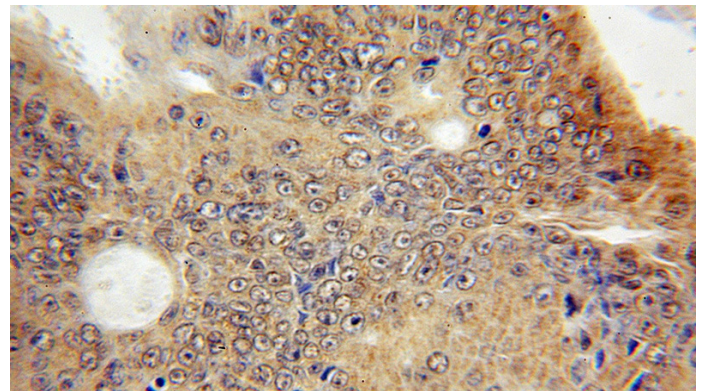
WB: 1:200-1:1000

IHC: 1:20-1:200

Validations



human brain tissue were subjected to SDS PAGE followed by western blot with Catalog No:109451(Connexin-26 antibody) at dilution of 1:300



Immunohistochemical of paraffin-embedded human colon cancer using Catalog No:109451(Connexin-26 antibody) at dilution of 1:50 (under 10x lens)