

Connexin-26 antibody



Catalog Number: 109450

Product name

Connexin-26 antibody

Specificity

Human, Mouse, Rat; other species not tested.

Antibody description

Connexin-26 Rabbit Polyclonal antibody. Positive WB detected in PC-3 cells, human liver tissue. Observed molecular weight by Western-blot: 26kd

Preparation

This antibody was obtained by immunization of Connexin-26 recombinant protein (Accession Number: XM_011535049). Purification method: Antigen affinity purified.

Formulation

PBS with 0.02% sodium azide and 50% glycerol pH 7.3.

Storage

Store at -20°C. DO NOT ALIQUOT

Clonality

Polyclonal

Ig Type

Rabbit IgG

Applications

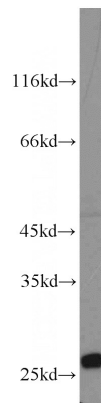
ELISA, WB

Dilutions

Recommended Dilution:

WB: 1:200-1:2000

Validations



PC-3 cells were subjected to SDS PAGE followed by western blot with Catalog No:109450(Connexin-26 antibody) at dilution of 1:500