

# Cofilin 2 antibody



Catalog Number: 109366

## Product name

Cofilin 2 antibody

## Specificity

Human, Mouse, Rat; other species not tested.

## Antibody description

Cofilin 2 Rabbit Polyclonal antibody. Positive WB detected in human liver tissue, L02 cells, mouse liver tissue, mouse lung tissue, mouse skeletal muscle tissue. Positive IHC detected in human skeletal muscle tissue, human gliomas tissue, human heart tissue. Positive IF detected in L02 cells. Observed molecular weight by Western-blot: 19 kDa

## Preparation

This antibody was obtained by immunization of Cofilin 2 recombinant protein (Accession Number: NM\_021914). Purification method: Antigen affinity purified.

## Formulation

PBS with 0.1% sodium azide and 50% glycerol pH 7.3.

## Storage

Store at -20°C. DO NOT ALIQUOT

## Clonality

Polyclonal

## Ig Type

Rabbit IgG

## Applications

ELISA, WB, IHC, IF

## Dilutions

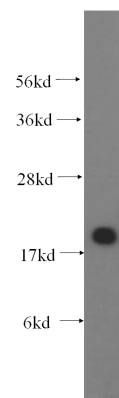
Recommended Dilution:

WB: 1:500-1:5000

IHC: 1:20-1:200

IF: 1:20-1:200

## Validations



human liver tissue were subjected to SDS PAGE followed by western blot with Catalog No:109366(CFL2 antibody) at dilution of 1:400

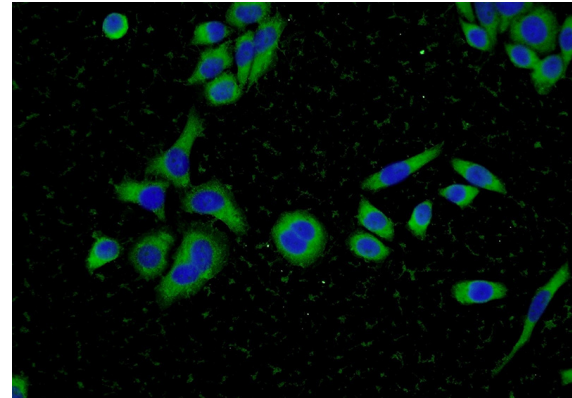
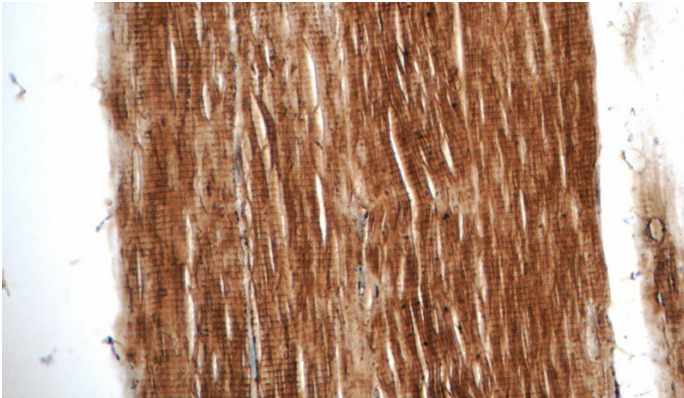


Immunohistochemistry of paraffin-embedded human skeletal muscle tissue slide using Catalog No:109366(CFL2 Antibody) at dilution of 1:50 (under 10x lens)

# Cofilin 2 antibody

Catalog Number: 109366

---



Immunohistochemistry of paraffin-embedded human skeletal muscle tissue slide using Catalog No:109366(CFL2 Antibody) at dilution of 1:50 (under 40x lens)

Immunofluorescent analysis of L02 cells using Catalog No:109366(CFL2 Antibody) at dilution of 1:50 and Alexa Fluor 488-conjugated AffiniPure Goat Anti-Rabbit IgG(H+L)