

# CLCA2 antibody

Catalog Number: 109344

## General Information

### Product name:

CLCA2 antibody

### Immunogen:

### Applications:

ELISA, WB, IHC

### Specificity:

Human, Mouse; other species not tested.

### Antibody description:

CLCA2 Rabbit Polyclonal antibody. Positive IHC detected in human oesophagus tissue. Positive WB detected in mouse lung tissue, COLO 320 cells. Observed molecular weight by Western-blot: 141 kDa, 35-40 kDa

## Properties

### Preparation:

This antibody was obtained by immunization of CLCA2 recombinant protein (Accession Number: BC041096). Purification method: Antigen affinity purified.

### Formulation:

PBS with 0.02% sodium azide and 50% glycerol pH 7.3.

### Storage:

Store at -20°C. DO NOT ALIQUOT

### Clonality:

Polyclonal

**Ig Type:**Rabbit IgG

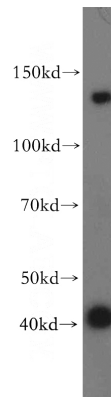
## Applications

Recommended Dilution:

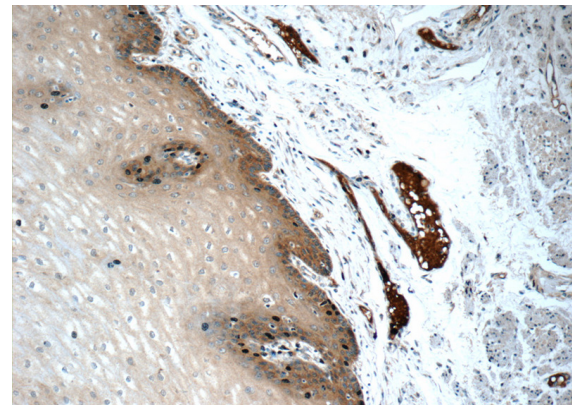
WB: 1:200-1:2000

IHC: 1:20-1:200

## Validations



mouse lung tissue were subjected to SDS PAGE followed by western blot with Catalog No:109344(CLCA2 antibody) at dilution of 1:300

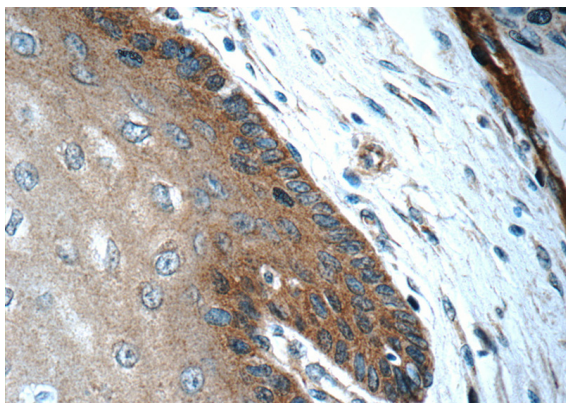


Immunohistochemistry of paraffin-embedded human oesophagus tissue slide using Catalog No:109344(CLCA2 Antibody) at dilution of 1:50 (under 10x lens)

## CLCA2 antibody

Catalog Number: 109344

---



Immunohistochemistry of paraffin-embedded human oesophagus tissue slide using Catalog No:109344 (CLCA2 Antibody) at dilution of 1:50 (under 40x lens)