

# Claudin 11 antibody



Catalog Number: 109337

## Product name

Claudin 11 antibody

IHC: 1:20-1:200

IF: 1:20-1:200

## Specificity

Human; other species not tested.

## Antibody description

Claudin 11 Rabbit Polyclonal antibody. Positive WB detected in human testis tissue. Positive FC detected in HepG2 cells. Positive IF detected in HepG2 cells. Positive IHC detected in human testis tissue. Observed molecular weight by Western-blot: 22 kDa

## Preparation

This antibody was obtained by immunization of Claudin 11 recombinant protein (Accession Number: NM\_005602). Purification method: Antigen affinity purified.

## Formulation

PBS with 0.02% sodium azide and 50% glycerol pH 7.3.

## Storage

Store at -20°C. DO NOT ALIQUOT

## Clonality

Polyclonal

## Ig Type

Rabbit IgG

## Applications

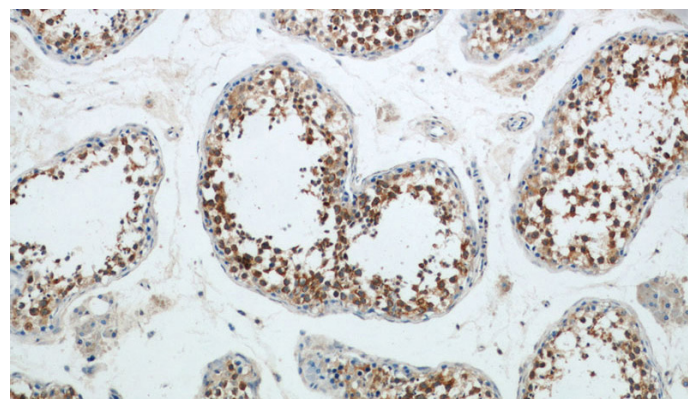
ELISA, WB, IHC, IF, FC

## Dilutions

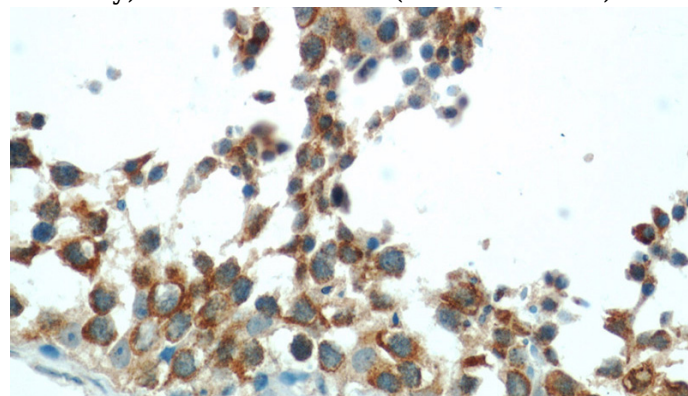
Recommended Dilution:

WB: 1:200-1:2000

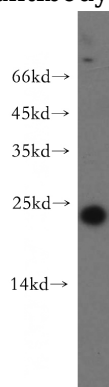
## Validations



Immunohistochemical of paraffin-embedded human testis using Catalog No:109337(CLDN11 antibody) at dilution of 1:50 (under 10x lens)



Immunohistochemical of paraffin-embedded human testis using Catalog No:109337(CLDN11 antibody) at dilution of 1:50 (under 40x lens)

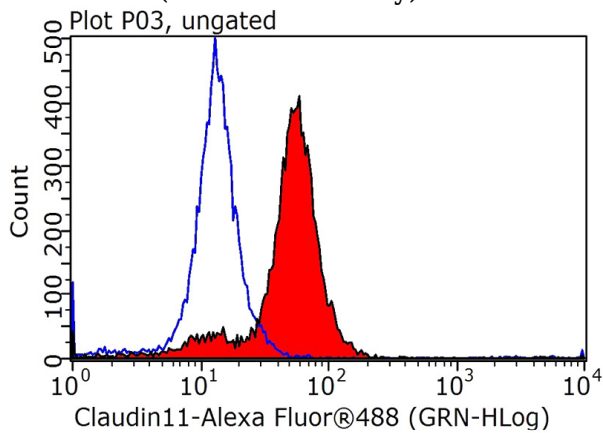


human testis tissue were subjected to SDS PAGE followed by western blot with Catalog

# Claudin 11 antibody

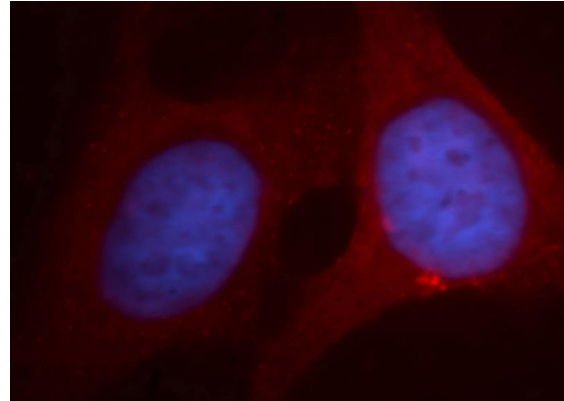
Catalog Number: 109337

No:109337(CLDN11 antibody) at dilution of 1:500



1X10<sup>6</sup> HepG2 cells were stained with 0.2ug CLDN11 antibody (Catalog No:109337, red) and control antibody (blue). Fixed with 90% MeOH blocked with 3% BSA (30 min). Alexa Fluor 488-

conjugated AffiniPure Goat Anti-Rabbit IgG(H+L) with dilution 1:1000.



Immunofluorescent analysis of HepG2 cells, using CLDN11 antibody Catalog No:109337 at 1:100 dilution and PE-labeled goat anti-rabbit IgG(red). Blue pseudocolor = DAPI (fluorescent DNA dye).