

# CIB1 antibody

Catalog Number: 109311

## Product name

CIB1 antibody

WB: 1:500-1:5000

IP: 1:200-1:1000

## Specificity

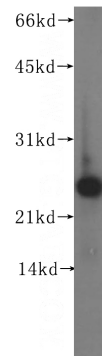
Human, Mouse, Rat; other species not tested.

IHC: 1:20-1:200

## Antibody description

CIB1 Rabbit Polyclonal antibody. Positive IHC detected in human breast cancer tissue, human testis tissue, rat testis tissue. Positive IP detected in mouse testis tissue. Positive WB detected in human liver tissue, HepG2 cells, rat testis tissue. Observed molecular weight by Western-blot: 22 kDa

## Validations



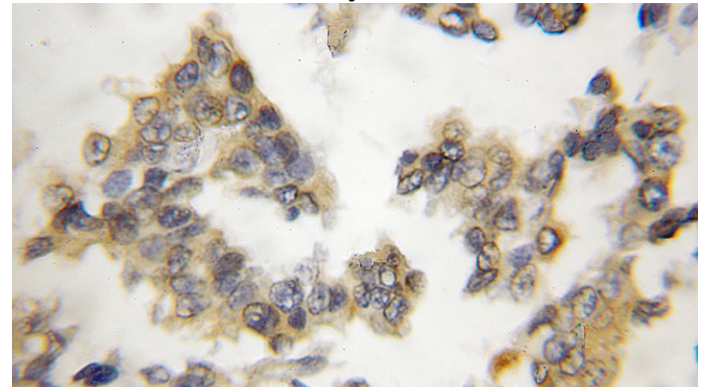
## Preparation

This antibody was obtained by immunization of CIB1 recombinant protein (Accession Number: NM\_006384). Purification method: Antigen affinity purified.

human liver tissue were subjected to SDS PAGE followed by western blot with Catalog No:109311(CIB1 antibody) at dilution of 1:400

## Formulation

PBS with 0.1% sodium azide and 50% glycerol pH 7.3.



## Storage

Store at -20°C. DO NOT ALIQUOT

## Clonality

Polyclonal

Immunohistochemical of paraffin-embedded human breast cancer using Catalog No:109311(CIB1 antibody) at dilution of 1:50 (under 10x lens)

## Ig Type

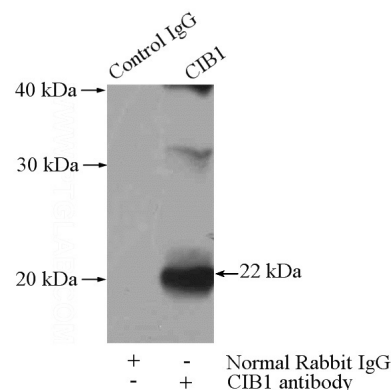
Rabbit IgG

## Applications

ELISA, WB, IHC, IP

## Dilutions

Recommended Dilution:



# CIB1 antibody



Catalog Number: 109311

---

IP Result of anti-CIB1 (IP:Catalog No:109311, 4ug; Detection:Catalog No:109311 1:300) with mouse testis tissue lysate 4000ug.