

# CHOP antibody



Catalog Number: 109271

## Product name

CHOP antibody

Recommended Dilution:

WB: 1:500-1:5000

## Immunogen

IHC: 1:20-1:200

## Specificity

Human, Mouse, Rat; other species not tested.

## Antibody description

CHOP Rabbit Polyclonal antibody. Positive FC detected in HeLa cells. Positive IHC detected in human cervical cancer tissue, human breast cancer tissue. Positive WB detected in RAW264.7 cells, A375 cells, HeLa cells, MCF7 cells, Tunicamycin treated HeLa cells. Observed molecular weight by Western-blot: 30 kDa

## Preparation

This antibody was obtained by immunization of CHOP recombinant protein (Accession Number: NM\_004083). Purification method: Antigen affinity purified.

## Formulation

PBS with 0.02% sodium azide and 50% glycerol pH 7.3.

## Storage

Store at -20°C. DO NOT ALIQUOT

## Clonality

Polyclonal

## Ig Type

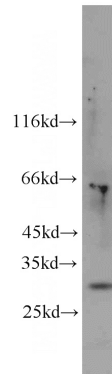
Rabbit IgG

## Applications

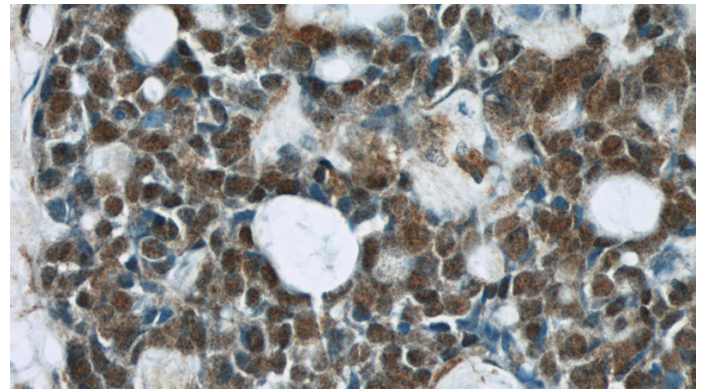
ELISA, IHC, FC, WB

## Dilutions

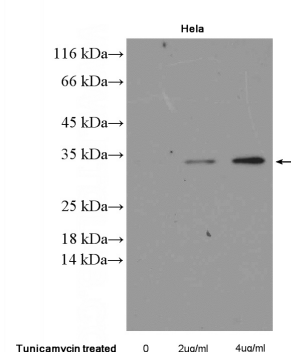
## Validations



RAW264.7 cells were subjected to SDS PAGE followed by western blot with Catalog No:109271(CHOP; GADD153 antibody) at dilution of 1:1000



Immunohistochemical of paraffin-embedded human cervical cancer using Catalog No:109271(CHOP; GADD153 antibody) at dilution



of 1:50 (under 40x lens)

# CHOP antibody



Catalog Number: 109271

Tunicamycin treated Hela cells were subjected to SDS PAGE followed by western blot with Catalog No:109271(CHOP; GADD153 Antibody) at dilution of 1:300

1X10<sup>6</sup> HeLa cells were stained with 0.2ug CHOP; GADD153 antibody (Catalog No:109271, red) and control antibody (blue). Fixed with 4% PFA blocked with 3% BSA (30 min). Alexa Fluor 488-conjugated AffiniPure Goat Anti-Rabbit IgG(H+L) with dilution 1:1000.

