

CEP250/CNAP1 antibody



Catalog Number: 109270

Product name

CEP250/CNAP1 antibody

Specificity

Human, Mouse, Rat; other species not tested.

Antibody description

CEP250/CNAP1 Rabbit Polyclonal antibody. Positive WB detected in HeLa cells. Positive IP detected in HeLa cells. Positive IHC detected in human placenta tissue, human brain tissue, human heart tissue, human lung tissue, human ovary tissue, human spleen tissue. Positive IF detected in HeLa cells, HepG2 cells. Observed molecular weight by Western-blot: 250 kDa

Preparation

This antibody was obtained by immunization of CEP250/CNAP1 recombinant protein (Accession Number: BC001433). Purification method: Antigen affinity purified.

Formulation

PBS with 0.02% sodium azide and 50% glycerol pH 7.3.

Storage

Store at -20°C. DO NOT ALIQUOT

Clonality

Polyclonal

Ig Type

Rabbit IgG

Applications

ELISA, WB, IF, IP, IHC

Dilutions

Recommended Dilution:

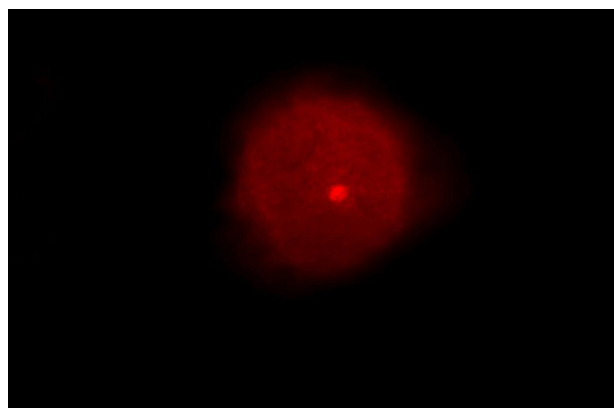
WB: 1:200-1:2000

IP: 1:200-1:2000

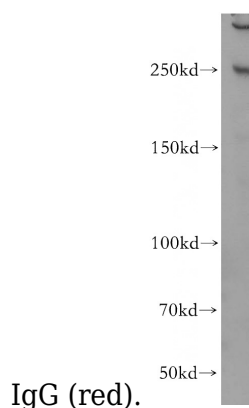
IHC: 1:50-1:500

IF: 1:10-1:100

Validations



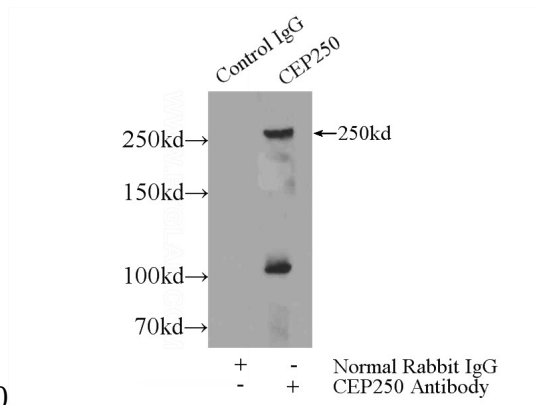
Immunofluorescent analysis of HeLa cells, using CEP250 antibody Catalog No:109270 at 1:25 dilution and Rhodamine-labeled goat anti-rabbit



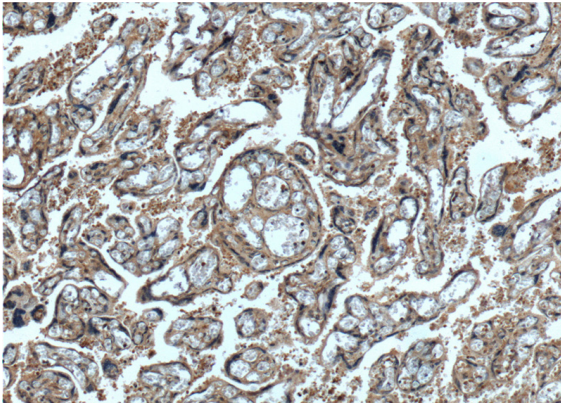
HeLa cells were subjected to SDS PAGE followed by western blot with Catalog No:109270(CEP250,C-NAP1 antibody) at dilution

CEP250/CNAP1 antibody

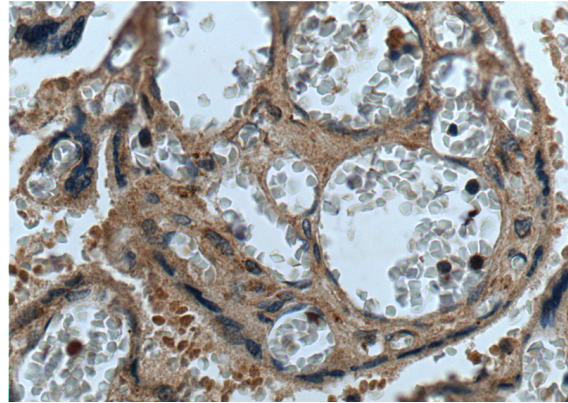
Catalog Number: 109270



IP Result of anti-CEP250,C-NAP1 (IP:Catalog No:109270, 5ug; Detection:Catalog No:109270 1:500) with HeLa cells lysate 1200ug.



Immunohistochemistry of paraffin-embedded human placenta tissue slide using Catalog No:109270(CEP250,C-NAP1 Antibody) at dilution of 1:200 (under 10x lens).



Immunohistochemistry of paraffin-embedded human placenta tissue slide using Catalog No:109270(CEP250,C-NAP1 Antibody) at dilution of 1:200 (under 40x lens).