

CEP170L antibody



Catalog Number: 109268

Product name

CEP170L antibody

Specificity

Human, Mouse, Rat; other species not tested.

Antibody description

CEP170L Rabbit Polyclonal antibody. Positive WB detected in mouse testis tissue, rat testis tissue. Positive IF detected in Hela cells. Observed molecular weight by Western-blot: 38-42 kDa

Preparation

This antibody was obtained by immunization of CEP170L recombinant protein (Accession Number: BC014590). Purification method: Antigen affinity purified.

Formulation

PBS with 0.1% sodium azide and 50% glycerol pH 7.3.

Storage

Store at -20°C. DO NOT ALIQUOT

Clonality

Polyclonal

Ig Type

Rabbit IgG

Applications

ELISA, IF, WB

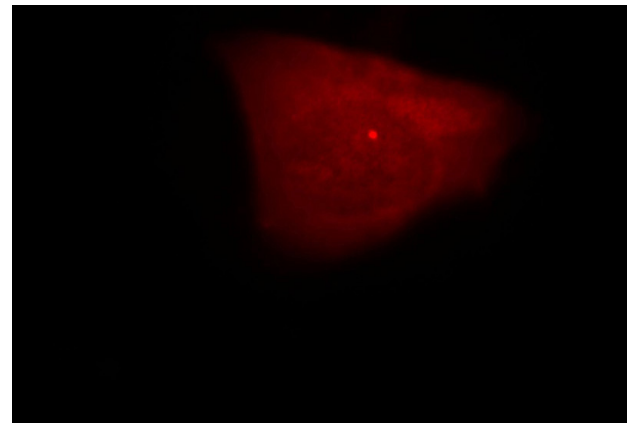
Dilutions

Recommended Dilution:

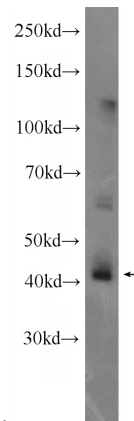
WB: 1:500-1:5000

IF: 1:10-1:100

Validations



Immunofluorescent analysis of Hela cells, using CEP170L antibody Catalog No:109268 at 1:25 dilution and Rhodamine-labeled goat anti-rabbit



IgG (red).

mouse testis tissue were subjected to SDS PAGE followed by western blot with Catalog No:109268(CEP170L Antibody) at dilution of 1:1000