

CEBPA antibody

Catalog Number: 109245

Product name

CEBPA antibody

Specificity

Human, Mouse, Rat; other species not tested.

Antibody description

CEBPA Rabbit Polyclonal antibody. Positive WB detected in L02 cells, human liver tissue. Positive IP detected in L02 cells. Observed molecular weight by Western-blot: 43-45 kDa

Preparation

This antibody was obtained by immunization of Peptide (Accession Number: NM_004364). Purification method: Antigen affinity purified.

Formulation

PBS with 0.02% sodium azide and 50% glycerol pH 7.3.

Storage

Store at -20°C. DO NOT ALIQUOT

Clonality

Polyclonal

Ig Type

Rabbit IgG

Applications

ELISA, WB, IP

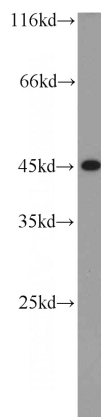
Dilutions

Recommended Dilution:

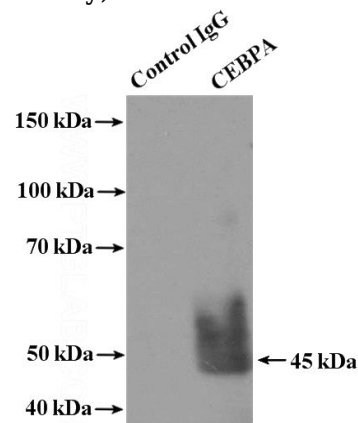
WB: 1:200-1:2000

IP: 1:200-1:2000

Validations



L02 cells were subjected to SDS PAGE followed by western blot with Catalog No:109245(CEBPA antibody) at dilution of 1:500



IP Result of anti-CEBPA (IP:Catalog No:109245, 4ug; Detection:Catalog No:109245 1:500) with L02 cells lysate 1800ug.