

CHCHD3 antibody



Catalog Number: 109213

Product name

CHCHD3 antibody

WB: 1:500-1:5000

IP: 1:500-1:5000

Specificity

Human, Mouse; other species not tested.

IHC: 1:20-1:200

IF: 1:20-1:200

Antibody description

CHCHD3 Rabbit Polyclonal antibody. Positive IHC detected in human liver tissue, human heart tissue. Positive IF detected in HepG2 cells. Positive IP detected in HeLa cells. Positive WB detected in HeLa cells, A431 cells, HEK-293 cells, mouse liver tissue. Observed molecular weight by Western-blot: 26 kDa

Preparation

This antibody was obtained by immunization of CHCHD3 recombinant protein (Accession Number: NM_017812). Purification method: Antigen affinity purified.

Formulation

PBS with 0.1% sodium azide and 50% glycerol pH 7.3.

Storage

Store at -20°C. DO NOT ALIQUOT

Clonality

Polyclonal

Ig Type

Rabbit IgG

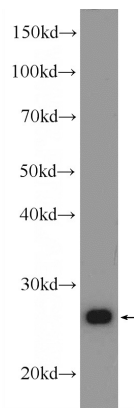
Applications

ELISA, WB, IHC, IF, IP

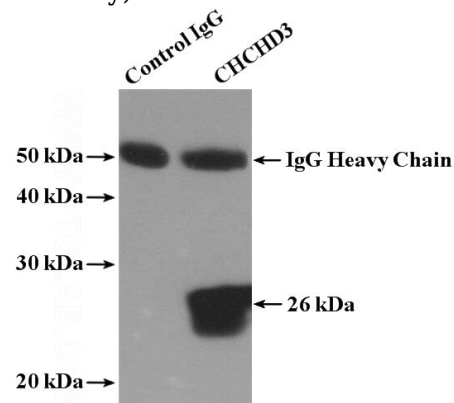
Dilutions

Recommended Dilution:

Validations



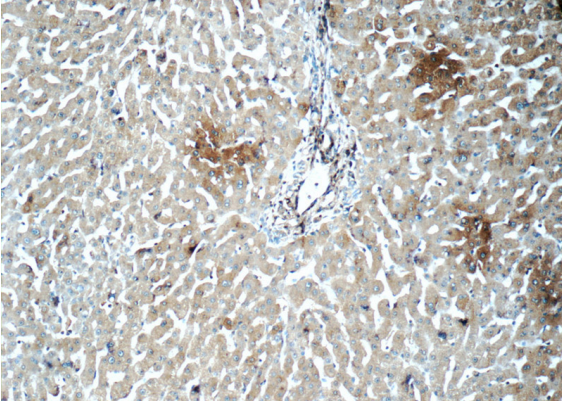
HeLa cells were subjected to SDS PAGE followed by western blot with Catalog No:109213(CHCHD3 Antibody) at dilution of 1:1000




IP Result of anti-CHCHD3 (IP:Catalog No:109213, 4ug; Detection:Catalog No:109213 1:1000) with HeLa cells lysate 2600ug.

CHCHD3 antibody

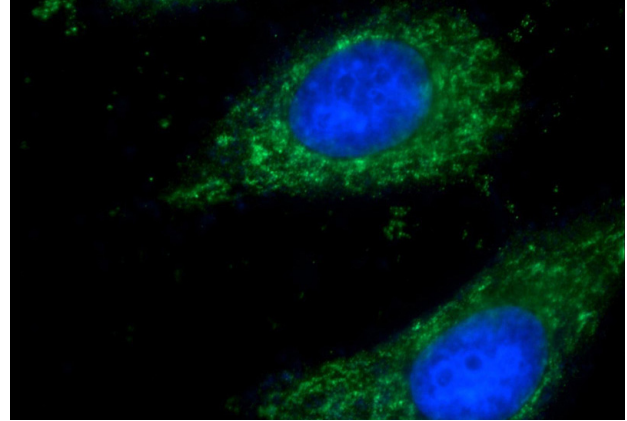
Catalog Number: 109213



Immunohistochemistry of paraffin-embedded human liver tissue slide using Catalog No:109213(CHCHD3 Antibody) at dilution of 1:50 (under 10x lens) 

Immunohistochemistry of paraffin-embedded human liver tissue slide using Catalog

No:109213(CHCHD3 Antibody) at dilution of 1:50 (under 40x lens)



Immunofluorescent analysis of HepG2 cells using Catalog No:109213(CHCHD3 Antibody) at dilution of 1:50 and Alexa Fluor 488-conjugated AffiniPure Goat Anti-Rabbit IgG(H+L)