

CHCHD10 antibody



Catalog Number: 109211

Product name

CHCHD10 antibody

IP: 1:200-1:2000

IHC: 1:20-1:200

Specificity

Human, Mouse; other species not tested.

IF: 1:10-1:100

Antibody description

CHCHD10 Rabbit Polyclonal antibody. Positive WB detected in mouse heart tissue, mouse brain tissue. Positive IP detected in mouse heart tissue. Positive IHC detected in human heart tissue. Positive IF detected in A431 cells. Observed molecular weight by Western-blot: 14 kDa

Preparation

This antibody was obtained by immunization of CHCHD10 recombinant protein (Accession Number: NM_213720). Purification method: Antigen affinity purified.

Formulation

PBS with 0.1% sodium azide and 50% glycerol pH 7.3.

Storage

Store at -20°C. DO NOT ALIQUOT

Clonality

Polyclonal

Ig Type

Rabbit IgG

Applications

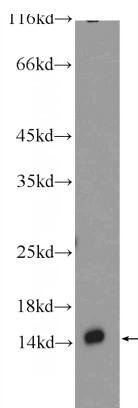
ELISA, WB, IHC, IF, IP

Dilutions

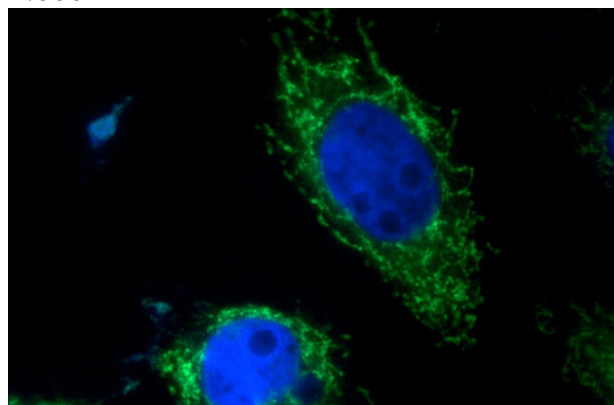
Recommended Dilution:

WB: 1:200-1:2000

Validations



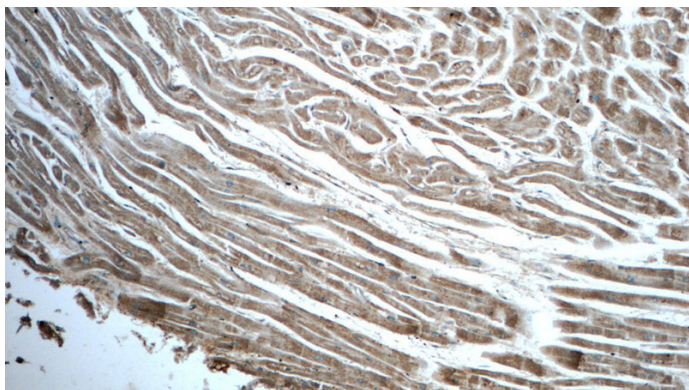
mouse heart tissue were subjected to SDS PAGE followed by western blot with Catalog No:109211(CHCHD10 Antibody) at dilution of 1:600



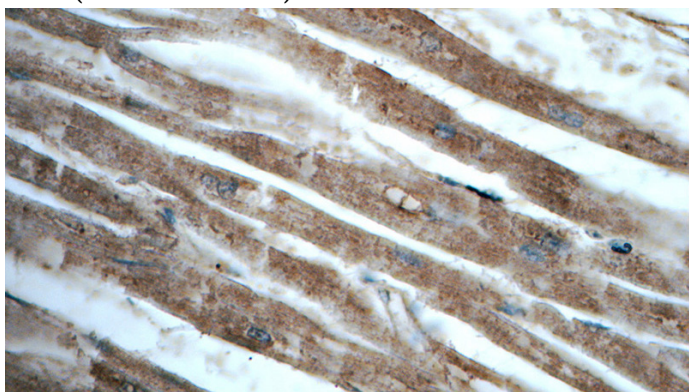
Immunofluorescent analysis of A431 cells using Catalog No:109211(CHCHD10 Antibody) at dilution of 1:25 and Alexa Fluor 488-conjugated AffiniPure Goat Anti-Rabbit IgG(H+L)

CHCHD10 antibody

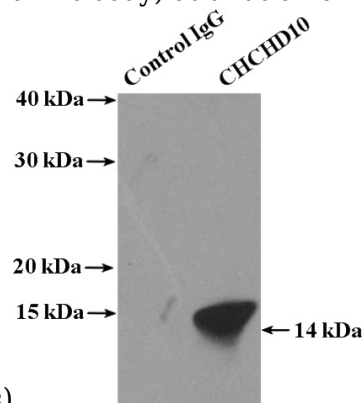
Catalog Number: 109211



Immunohistochemistry of paraffin-embedded human heart tissue slide using Catalog No:109211(CHCHD10 Antibody) at dilution of 1:50 (under 10x lens)



Immunohistochemistry of paraffin-embedded human heart tissue slide using Catalog No:109211(CHCHD10 Antibody) at dilution of



1:50 (under 40x lens)

IP Result of anti-CHCHD10 (IP:Catalog No:109211, 4ug; Detection:Catalog No:109211 1:600) with mouse heart tissue lysate 4000ug.