

# CEP72 antibody

Catalog Number: 109186

## Product name

CEP72 antibody

IP: 1:500-1:5000

IF: 1:10-1:100

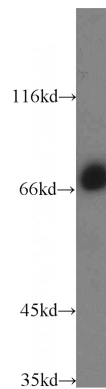
## Specificity

Human, Mouse; other species not tested.

## Validations

## Antibody description

CEP72 Rabbit Polyclonal antibody. Positive IP detected in HeLa cells. Positive WB detected in HeLa cells, HEK-293 cells, mouse testis tissue. Positive IF detected in HeLa cells. Observed molecular weight by Western-blot: 72 kDa



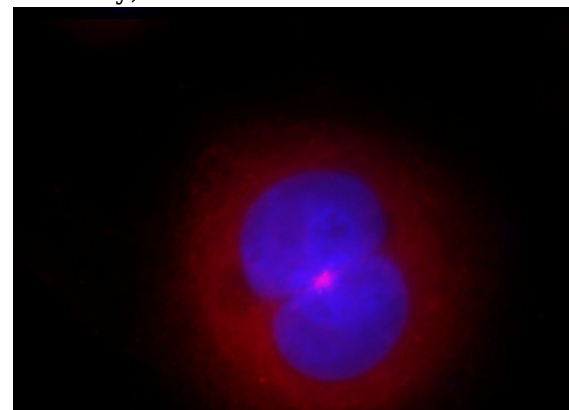
## Preparation

This antibody was obtained by immunization of CEP72 recombinant protein (Accession Number: XM\_047417363). Purification method: Antigen affinity purified.

HeLa cells were subjected to SDS PAGE followed by western blot with Catalog No:109186(CEP72 antibody) at dilution of 1:1000

## Formulation

PBS with 0.02% sodium azide and 50% glycerol pH 7.3.



## Storage

Store at -20°C. DO NOT ALIQUOT

## Clonality

Polyclonal

## Ig Type

Rabbit IgG

## Applications

ELISA, WB, IF, IP

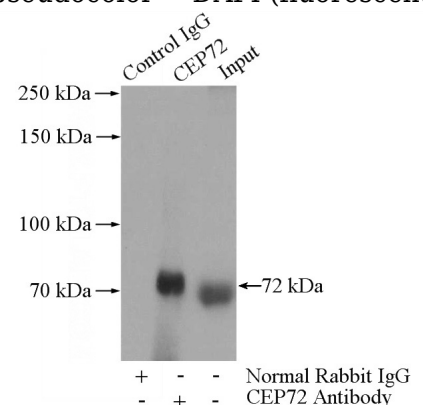
## Dilutions

Recommended Dilution:

WB: 1:1000-1:10000

Immunofluorescent analysis of HeLa cells, using CEP72 antibody Catalog No:109186 at 1:25 dilution and Rhodamine-labeled goat anti-rabbit IgG (red). Blue pseudocolor = DAPI (fluorescent

DNA dye).



# CEP72 antibody



Catalog Number: 109186

---

IP Result of anti-CEP72 (IP:Catalog No:109186,

4ug; Detection:Catalog No:109186 1:1000) with HeLa cells lysate 520ug.