

CEP68 antibody



Catalog Number: 109184

Product name

CEP68 antibody

IHC: 1:20-1:200

IF: 1:10-1:100

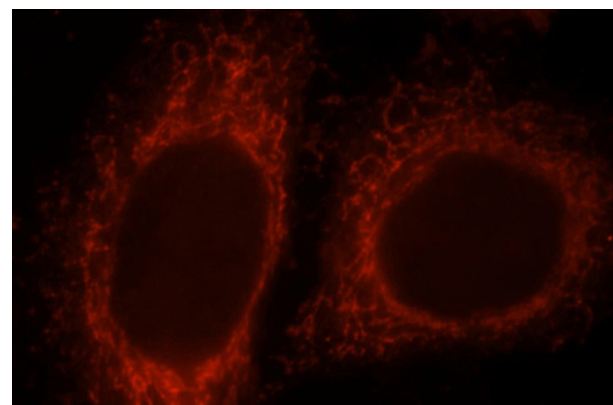
Specificity

Human; other species not tested.

Validations

Antibody description

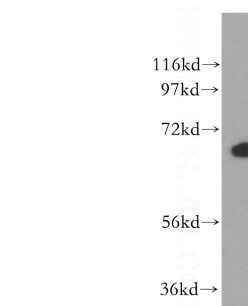
CEP68 Rabbit Polyclonal antibody. Positive WB detected in Jurkat cells, HeLa cells. Positive IF detected in HepG2 cells. Positive IHC detected in human brain tissue. Observed molecular weight by Western-blot: 68 kDa



Immunofluorescent analysis of HepG2 cells, using CEP68 antibody Catalog No:109184 at 1:25 dilution and Rhodamine-labeled goat anti-rabbit

Preparation

This antibody was obtained by immunization of CEP68 recombinant protein (Accession Number: NM_001319101). Purification method: Antigen affinity purified.



IgG (red).

Formulation

PBS with 0.02% sodium azide and 50% glycerol pH 7.3.

Jurkat cells were subjected to SDS PAGE followed by western blot with Catalog No:109184(CEP68 antibody) at dilution of 1:400

Storage

Store at -20°C. DO NOT ALIQUOT

Clonality

Polyclonal

Ig Type

Rabbit IgG

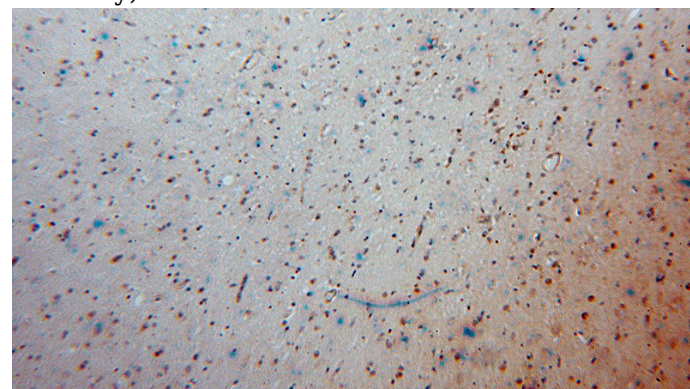
Applications

ELISA, WB, IHC, IF

Dilutions

Recommended Dilution:

WB: 1:500-1:5000

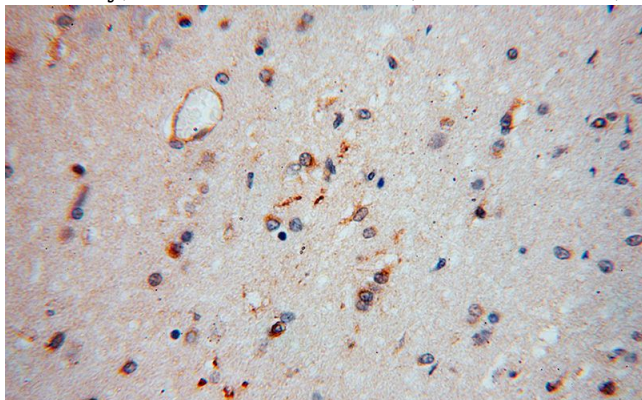


Immunohistochemical of paraffin-embedded human brain using Catalog No:109184(CEP68

CEP68 antibody

Catalog Number: 109184

antibody) at dilution of 1:100 (under 10x lens)



Immunohistochemical of paraffin-embedded human brain using Catalog No:109184(CEP68 antibody) at dilution of 1:100 (under 40x lens)