

# CDC6 antibody



Catalog Number: 109111

## Product name

CDC6 antibody

IHC: 1:20-1:200

IF: 1:20-1:200

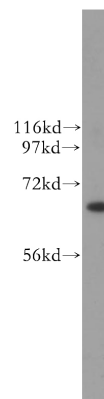
## Specificity

Human, Mouse, Rat; other species not tested.

## Antibody description

CDC6 Rabbit Polyclonal antibody. Positive WB detected in HeLa cells, Jurkat cells, SMMC-7721 cells. Positive IHC detected in human colon cancer tissue, human colon tissue. Positive IF detected in HepG2 cells. Observed molecular weight by Western-blot: 63 kDa

## Validations



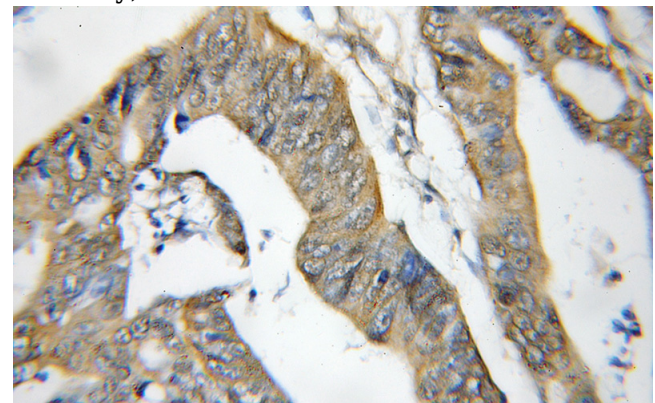
## Preparation

This antibody was obtained by immunization of CDC6 recombinant protein (Accession Number: NM\_001254). Purification method: Antigen affinity purified.

HeLa cells were subjected to SDS PAGE followed by western blot with Catalog No:109111(CDC6 antibody) at dilution of 1:400

## Formulation

PBS with 0.1% sodium azide and 50% glycerol pH 7.3.



## Storage

Store at -20°C. DO NOT ALIQUOT

## Clonality

Polyclonal

Immunohistochemical of paraffin-embedded human colon cancer using Catalog No:109111(CDC6 antibody) at dilution of 1:50 (under 10x lens)

## Ig Type

Rabbit IgG

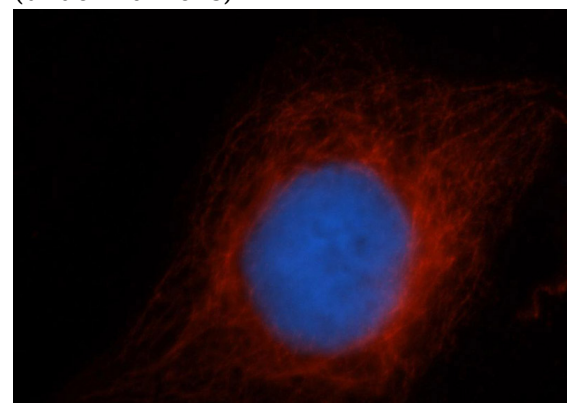
## Applications

ELISA, WB, IHC, IF

## Dilutions

Recommended Dilution:

WB: 1:1000-1:10000



Immunofluorescent analysis of HepG2 cells, using

# CDC6 antibody



Catalog Number: 109111

---

CDC6 antibody Catalog No:109111 at 1:50 and

Rhodamine-labeled goat anti-rabbit IgG (red). Blue pseudocolor = DAPI (fluorescent DNA dye).