

CDC42 antibody

Catalog Number: 109105

Product name

CDC42 antibody

Immunogen

[Human CDC42 Recombinant protein \(GST tag\)](#)

Specificity

Human, Mouse, Rat; other species not tested.

Antibody description

CDC42 Rabbit Polyclonal antibody. Positive IHC detected in human pancreas cancer tissue, human gliomas tissue, human pancreas tissue, human skeletal muscle tissue. Positive IF detected in C6 cells, HeLa cells. Positive WB detected in mouse brain tissue. Observed molecular weight by Western-blot: 21 kDa

Preparation

This antibody was obtained by immunization of CDC42 recombinant protein (Accession Number: NM_001791). Purification method: Antigen affinity purified.

Formulation

PBS with 0.1% sodium azide and 50% glycerol pH 7.3.

Storage

Store at -20°C. DO NOT ALIQUOT

Clonality

Polyclonal

Ig Type

Rabbit IgG

Applications

ELISA, WB, IHC, IF

Dilutions

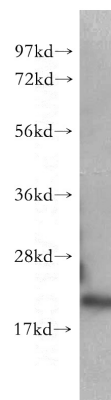
Recommended Dilution:

WB: 1:200-1:1000

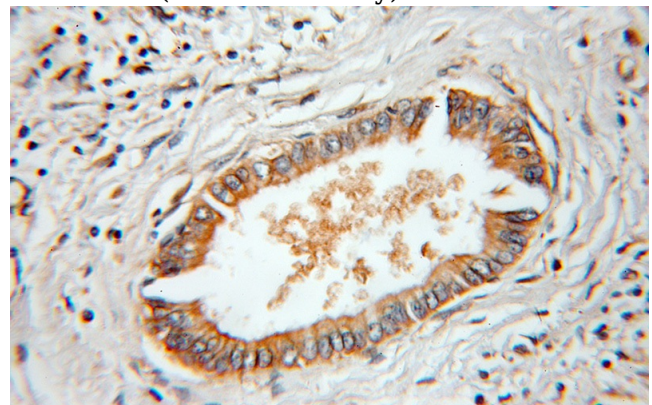
IHC: 1:20-1:200

IF: 1:20-1:200

Validations



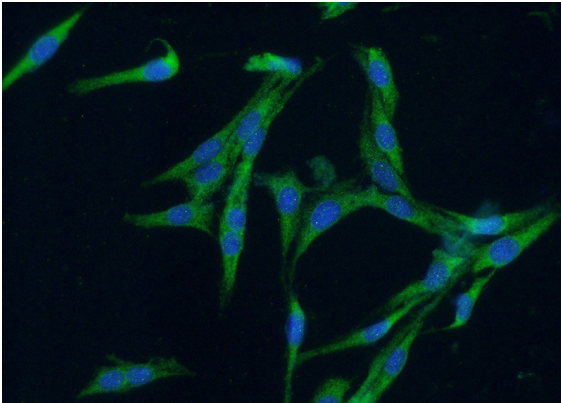
mouse brain tissue were subjected to SDS PAGE followed by western blot with Catalog No:109105(CDC42 antibody) at dilution of 1:400



Immunohistochemical of paraffin-embedded human pancreas cancer using Catalog No:109105(CDC42 antibody) at dilution of 1:50 (under 25x lens)

CDC42 antibody

Catalog Number: 109105



Immunofluorescent analysis of (-20oc Ethanol) fixed C6 cells using Catalog No:109105(CDC42 Antibody) at dilution of 1:50 and Alexa Fluor 488-conjugated AffiniPure Goat Anti-Rabbit IgG(H+L)