

# CDC34 antibody



Catalog Number: 109102

## Product name

CDC34 antibody

Recommended Dilution:

WB: 1:200-1:1000

## Immunogen

IP: 1:200-1:2000

[Human CDC34 Recombinant protein \(GST tag\)](#)

IHC: 1:20-1:200

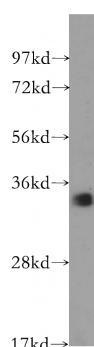
## Specificity

Human, Mouse, Rat; other species not tested.

## Validations

## Antibody description

CDC34 Rabbit Polyclonal antibody. Positive IP detected in mouse testis tissue. Positive WB detected in human pancreas tissue, human brain tissue. Positive IHC detected in human prostate cancer tissue. Observed molecular weight by Western-blot: 34 kDa



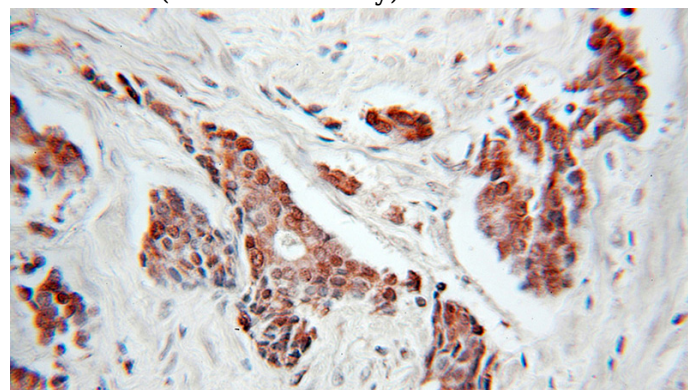
## Preparation

This antibody was obtained by immunization of CDC34 recombinant protein (Accession Number: NM\_004359). Purification method: Antigen affinity purified.

human pancreas tissue were subjected to SDS PAGE followed by western blot with Catalog No:109102(CDC34 antibody) at dilution of 1:300

## Formulation

PBS with 0.1% sodium azide and 50% glycerol pH 7.3.



## Storage

Store at -20°C. DO NOT ALIQUOT

Immunohistochemical of paraffin-embedded human prostate cancer using Catalog No:109102(CDC34 antibody) at dilution of 1:100

## Clonality

Polyclonal

## Ig Type

Rabbit IgG

## Applications

ELISA, WB, IHC, IP

## Dilutions

# CDC34 antibody

Catalog Number: 109102

---

IP Result of anti-CDC34 (IP:Catalog No:109102, 4ug; Detection:Catalog No:109102 1:500) with mouse testis tissue lysate 4000ug.

