

# CCS antibody

Catalog Number: 109080

## Product name

CCS antibody

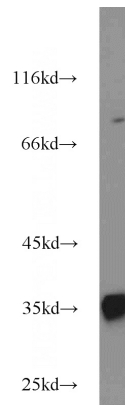
IP: 1:500-1:5000

IF: 1:20-1:200

## Specificity

Human; other species not tested.

## Validations



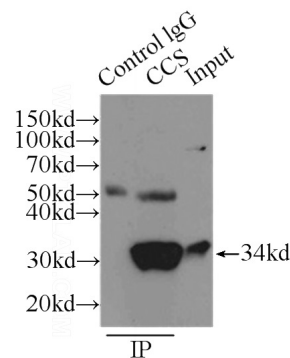
## Antibody description

CCS Rabbit Polyclonal antibody. Positive IP detected in HepG2 cells. Positive WB detected in HepG2 cells. Positive IF detected in HepG2 cells. Observed molecular weight by Western-blot: 34 kDa, 84 kDa

HepG2 cells were subjected to SDS PAGE followed by western blot with Catalog No:109080(CCS antibody) at dilution of 1:1000

## Preparation

This antibody was obtained by immunization of CCS recombinant protein (Accession Number: NM\_005125). Purification method: Antigen affinity purified.



## Formulation

PBS with 0.02% sodium azide and 50% glycerol pH 7.3.

IP Result of anti-CCS (IP:Catalog No:109080, 3ug; Detection:Catalog No:109080 1:1000) with HepG2 cells lysate 6000ug.

## Storage

Store at -20°C. DO NOT ALIQUOT

## Clonality

Polyclonal

## Ig Type

Rabbit IgG

## Applications

ELISA, WB, IP, IF

## Dilutions

Recommended Dilution:

WB: 1:500-1:5000

Immunofluorescent analysis of (10% Formaldehyde) fixed HepG2 cells using Catalog

# CCS antibody



Catalog Number: 109080

---

No:109080(CCS Antibody) at dilution of 1:50 and

Alexa Fluor 488-conjugated AffiniPure Goat Anti-Rabbit IgG(H+L)