

CD10,MME antibody



Catalog Number: 109039

Product name

CD10,MME antibody

Specificity

Human; other species not tested.

Antibody description

CD10,MME Rabbit Polyclonal antibody. Positive IHC detected in human kidney tissue, human renal cell carcinoma tissue. Positive FC detected in Jurkat cells.

Preparation

This antibody was obtained by immunization of CD10,MME recombinant protein (Accession Number: XM_011512857). Purification method: Antigen affinity purified.

Formulation

PBS with 0.02% sodium azide and 50% glycerol pH 7.3.

Storage

Store at -20°C. DO NOT ALIQUOT

Clonality

Polyclonal

Ig Type

Rabbit IgG

Applications

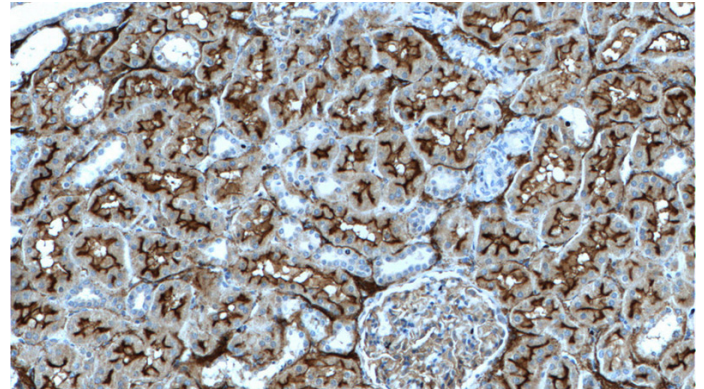
ELISA, FC, IHC

Dilutions

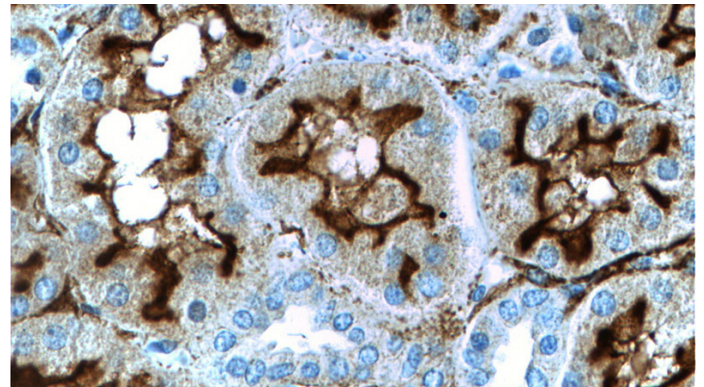
Recommended Dilution:

IHC: 1:20-1:200

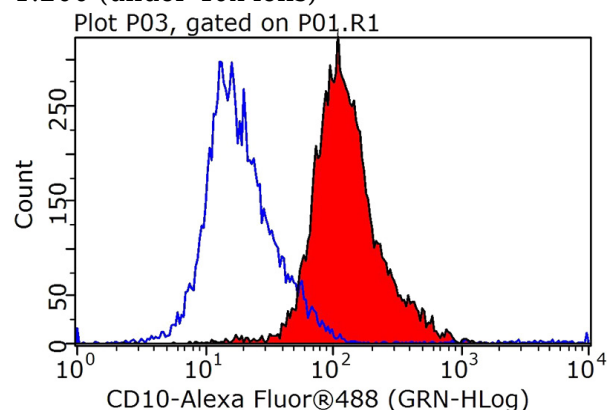
Validations



Immunohistochemistry of paraffin-embedded human kidney tissue slide using Catalog No:109039(CD10,MME Antibody) at dilution of 1:200 (under 10x lens)



Immunohistochemistry of paraffin-embedded human kidney tissue slide using Catalog No:109039(CD10,MME Antibody) at dilution of 1:200 (under 40x lens)



1X10⁶ Jurkat cells were stained with 0.5ug CD10,MME antibody (Catalog No:109039, red) and control antibody (blue). Fixed with 90% MeOH blocked with 3% BSA (30 min). Alexa Fluor 488-conjugated AffiniPure Goat Anti-Rabbit IgG(H+L) with dilution 1:1000.