

# CD31 antibody

Catalog Number: 109025

## Product name

CD31 antibody

## Specificity

Human; other species not tested.

## Antibody description

CD31 Rabbit Polyclonal antibody. Positive IHC detected in human renal cell carcinoma tissue, human endometrial cancer tissue, human gliomas tissue, human hepat°Cirrhosis tissue, human hysteryomyoma tissue, human liver tissue, human lung cancer tissue, human tonsil tissue, human tonsillitis tissue. Positive FC detected in HUVEC cells. Positive IP detected in Jurkat cells. Positive WB detected in Jurkat cells. Observed molecular weight by Western-blot: 80-100 kDa,130 kDa

## Preparation

This antibody was obtained by immunization of CD31 recombinant protein (Accession Number: XM\_011524889). Purification method: Antigen affinity purified.

## Formulation

PBS with 0.1% sodium azide and 50% glycerol pH 7.3.

## Storage

Store at -20°C. DO NOT ALIQUOT

## Clonality

Polyclonal

## Ig Type

Rabbit IgG

## Applications

ELISA, IP, IHC, WB, FC

## Dilutions

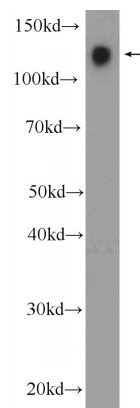
Recommended Dilution:

WB: 1:500-1:5000

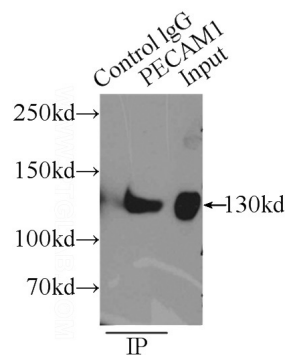
IP: 1:200-1:1000

IHC: 1:20-1:200

## Validations



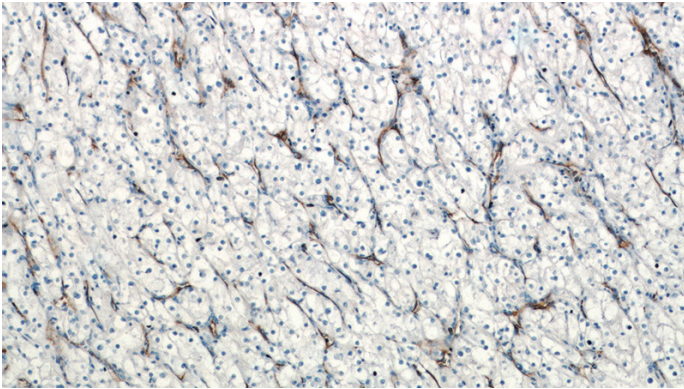
Jurkat cells were subjected to SDS PAGE followed by western blot with Catalog No:109025(CD31 Antibody) at dilution of 1:1000



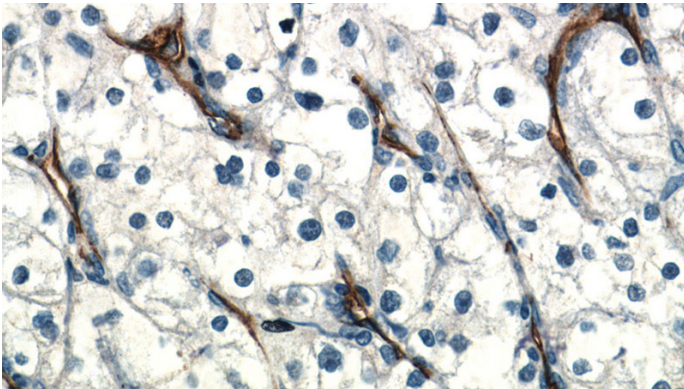
IP Result of anti-PECAM1,CD31 (IP:Catalog No:109025, 5ug; Detection:Catalog No:109025 1:300) with Jurkat cells lysate 4000ug.

# CD31 antibody

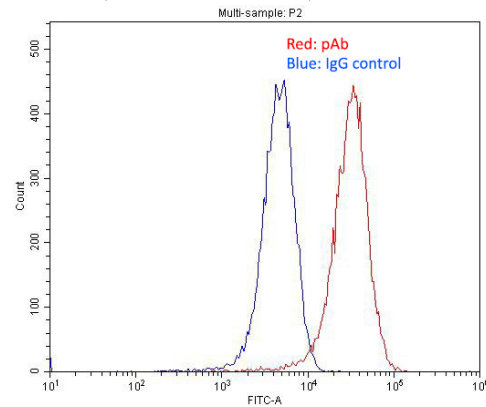
Catalog Number: 109025



Immunohistochemistry of paraffin-embedded human renal cell carcinoma tissue slide using Catalog No:109025(CD31 Antibody) at dilution of 1:400 (under 10x lens)



Immunohistochemistry of paraffin-embedded human renal cell carcinoma tissue slide using Catalog No:109025(CD31 Antibody) at dilution of 1:400 (under 40x lens)



1X10<sup>6</sup> HUVEC cells were stained with 0.2ug CD31 antibody (Catalog No:109025, red) and control antibody (blue). Fixed with 4% PFA blocked with 3% BSA (30 min). Alexa Fluor 488-conjugated AffiniPure Goat Anti-Rabbit IgG(H+L) with dilution 1:1500.