

# CCL28 antibody



Catalog Number: 109004

## Product name

CCL28 antibody

## Immunogen

[Human CCL28 Recombinant protein \(His tag\)](#)

## Specificity

Human, Mouse; other species not tested.

## Antibody description

CCL28 Rabbit Polyclonal antibody. Positive IHC detected in human colon tissue, human colon cancer tissue. Positive WB detected in human spleen tissue, Jurkat cells, PC-3 cells. Observed molecular weight by Western-blot: 8kd-9kd

## Preparation

This antibody was obtained by immunization of CCL28 recombinant protein (Accession Number: NM\_001301874). Purification method: Antigen affinity purified.

## Formulation

PBS with 0.02% sodium azide and 50% glycerol pH 7.3.

## Storage

Store at -20°C. DO NOT ALIQUOT

## Clonality

Polyclonal

## Ig Type

Rabbit IgG

## Applications

ELISA, WB, IHC

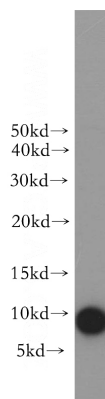
## Dilutions

Recommended Dilution:

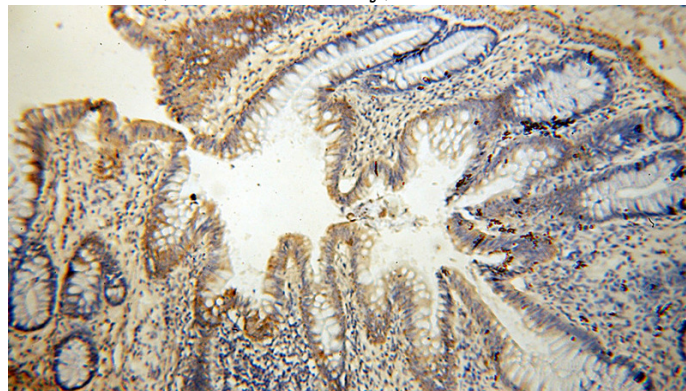
WB: 1:200-1:2000

IHC: 1:20-1:200

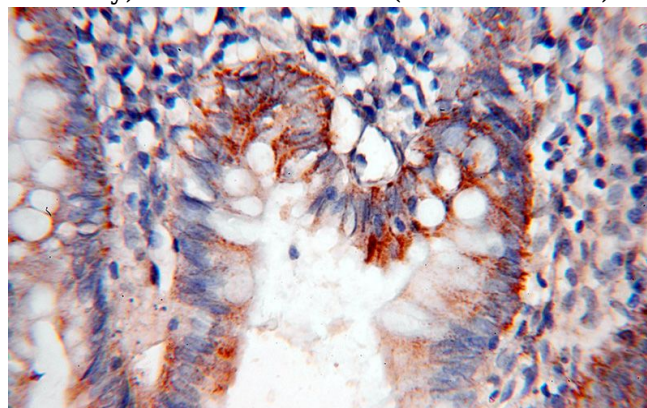
## Validations



human spleen tissue were subjected to SDS PAGE followed by western blot with Catalog No:109004(CCL28 antibody) at dilution of 1:300



Immunohistochemical of paraffin-embedded human colon using Catalog No:109004(CCL28 antibody) at dilution of 1:50 (under 10x lens)



# CCL28 antibody



Catalog Number: 109004

---

Immunohistochemical of paraffin-embedded

human colon using Catalog No:109004(CCL28 antibody) at dilution of 1:50 (under 40x lens)