

CCDC85B antibody



Catalog Number: 108990

General Information

Product name:

CCDC85B antibody

Immunogen:

Applications:

ELISA, WB, IF, IP

Specificity:

Human, Mouse; other species not tested.

Antibody description:

CCDC85B Rabbit Polyclonal antibody. Positive IP detected in mouse heart tissue. Positive WB detected in mouse heart tissue, mouse lung tissue. Positive IF detected in HeLa cells. Observed molecular weight by Western-blot: 24-28 kDa

Properties

Preparation:

This antibody was obtained by immunization of CCDC85B recombinant protein (Accession Number: NM_006848). Purification method: Antigen affinity purified.

Formulation:

PBS with 0.1% sodium azide and 50% glycerol pH 7.3.

Storage:

Store at -20°C. DO NOT ALIQUOT

Clonality:

Polyclonal

Ig Type:Rabbit IgG

Applications

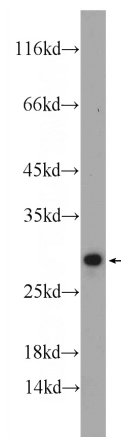
Recommended Dilution:

WB: 1:200-1:1000

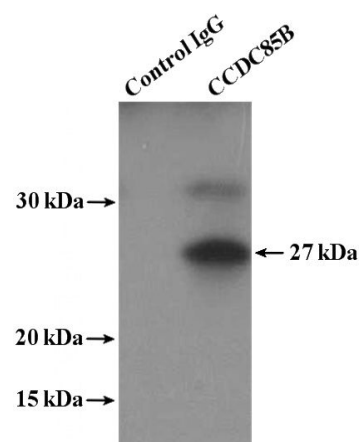
IP: 1:200-1:1000

IF: 1:50-1:500

Validations



mouse heart tissue were subjected to SDS PAGE followed by western blot with Catalog No:108990(CCDC85B Antibody) at dilution of 1:300

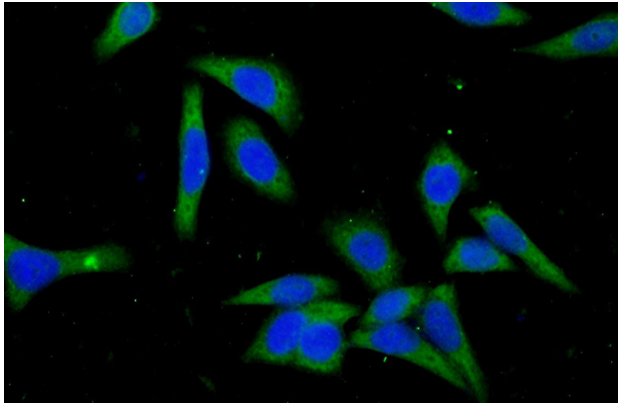


IP Result of anti-CCDC85B (IP:Catalog No:108990, 4ug; Detection:Catalog No:108990 1:300) with mouse heart tissue lysate 3600ug.

CCDC85B antibody



Catalog Number: 108990



Immunofluorescent analysis of (-20oc Ethanol) fixed HeLa cells using Catalog No:108990(CCDC85B Antibody) at dilution of 1:50 and Alexa Fluor 488-conjugated AffiniPure Goat Anti-Rabbit IgG(H+L)