

CCDC5 antibody



Catalog Number: 108976

Product name

CCDC5 antibody

Recommended Dilution:

WB: 1:500-1:5000

Immunogen

IP: 1:200-1:2000

Specificity

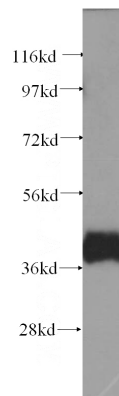
Human, Mouse, Rat; other species not tested.

IHC: 1:20-1:200

Antibody description

CCDC5 Rabbit Polyclonal antibody. Positive IHC detected in human pancreas cancer tissue. Positive IP detected in HeLa cells. Positive WB detected in human skeletal muscle tissue, HeLa cells. Observed molecular weight by Western-blot: 40 kDa

Validations



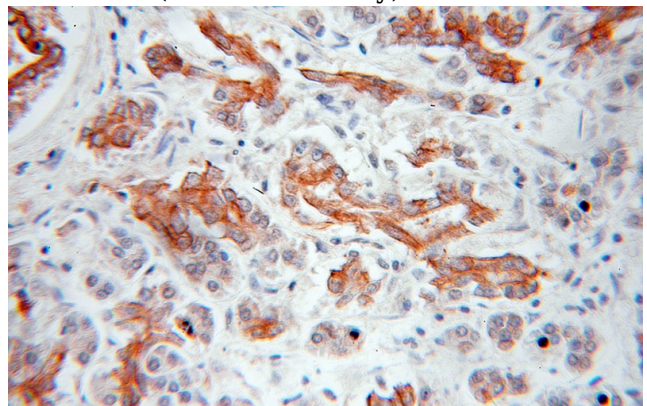
Preparation

This antibody was obtained by immunization of CCDC5 recombinant protein (Accession Number: NM_138443). Purification method: Antigen affinity purified.

human skeletal muscle tissue were subjected to SDS PAGE followed by western blot with Catalog No:108976(CCDC5 antibody) at dilution of 1:500

Formulation

PBS with 0.1% sodium azide and 50% glycerol pH 7.3.



Storage

Store at -20°C. DO NOT ALIQUOT

Clonality

Polyclonal

Immunohistochemical of paraffin-embedded human pancreas cancer using Catalog No:108976(CCDC5 antibody) at dilution of 1:50 (under 10x lens)

Ig Type

Rabbit IgG

Applications

ELISA, WB, IHC, IP

Dilutions

CCDC5 antibody



Catalog Number: 108976

IP Result of anti-CCDC5 (IP:Catalog No:108976, 4ug; Detection:Catalog No:108976 1:500) with HeLa cells lysate 1200ug.

