

# CCDC28A antibody



Catalog Number: 108971

## Product name

CCDC28A antibody

## Specificity

Human, Mouse, Rat; other species not tested.

## Antibody description

CCDC28A Rabbit Polyclonal antibody. Positive WB detected in A375 cells, HeLa cells, Jurkat cells, mouse thymus tissue. Positive IF detected in MCF-7 cells. Observed molecular weight by Western-blot: 68 kDa, 72 kDa

## Preparation

This antibody was obtained by immunization of CCDC28A recombinant protein (Accession Number: BC000758). Purification method: Antigen affinity purified.

## Formulation

PBS with 0.02% sodium azide and 50% glycerol pH 7.3.

## Storage

Store at -20°C. DO NOT ALIQUOT

## Clonality

Polyclonal

## Ig Type

Rabbit IgG

## Applications

ELISA, WB, IF

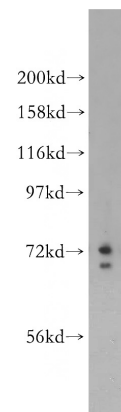
## Dilutions

Recommended Dilution:

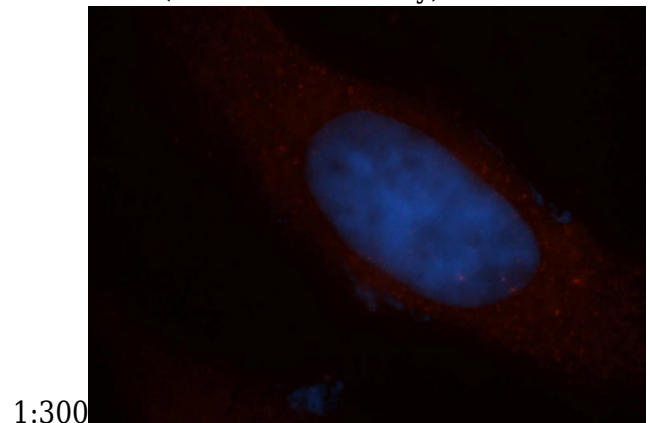
WB: 1:500-1:5000

IF: 1:20-1:200

## Validations



A375 cells were subjected to SDS PAGE followed by western blot with Catalog No:108971(CCDC28A antibody) at dilution of



Immunofluorescent analysis of MCF-7 cells, using CCDC28A antibody Catalog No:108971 at 1:50 dilution and Rhodamine-labeled goat anti-rabbit IgG (red). Blue pseudocolor = DAPI (fluorescent DNA dye).