

CCDC21 antibody



Catalog Number: 108967

Product name

CCDC21 antibody

Immunogen

[Human CCDC21 Recombinant protein \(His tag\)](#)

Specificity

Human; other species not tested.

Antibody description

CCDC21 Rabbit Polyclonal antibody. Positive WB detected in Jurkat cells, HeLa cells. Observed molecular weight by Western-blot: 85-90 kDa

Preparation

This antibody was obtained by immunization of CCDC21 recombinant protein (Accession Number: NM_022778). Purification method: Antigen affinity purified.

Formulation

PBS with 0.1% sodium azide and 50% glycerol pH 7.3.

Storage

Store at -20°C. DO NOT ALIQUOT

Clonality

Polyclonal

Ig Type

Rabbit IgG

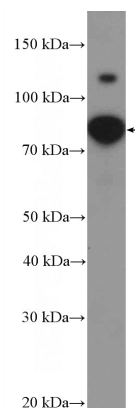
Applications

ELISA, WB

Dilutions

Recommended Dilution:
WB: 1:200-1:2000

Validations



Jurkat cells were subjected to SDS PAGE followed by western blot with Catalog No:108967(CCDC21 Antibody) at dilution of 1:600