

CC2D2A antibody

Catalog Number: 108953

Product name

CC2D2A antibody

Specificity

Human, Mouse; other species not tested.

Antibody description

CC2D2A Rabbit Polyclonal antibody. Positive WB detected in HEK-293 cells. Positive IHC detected in human lung cancer tissue. Positive IF detected in hTERT-RPE1 cells. Observed molecular weight by Western-blot: 190 kDa

Preparation

This antibody was obtained by immunization of Peptide (Accession Number: NM_020785). Purification method: Antigen affinity purified.

Formulation

PBS with 0.02% sodium azide and 50% glycerol pH 7.3.

Storage

Store at -20°C. DO NOT ALIQUOT

Clonality

Polyclonal

Ig Type

Rabbit IgG

Applications

ELISA, WB, IF, IHC

Dilutions

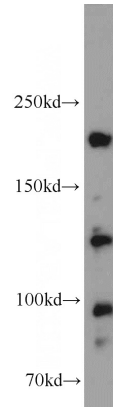
Recommended Dilution:

WB: 1:200-1:2000

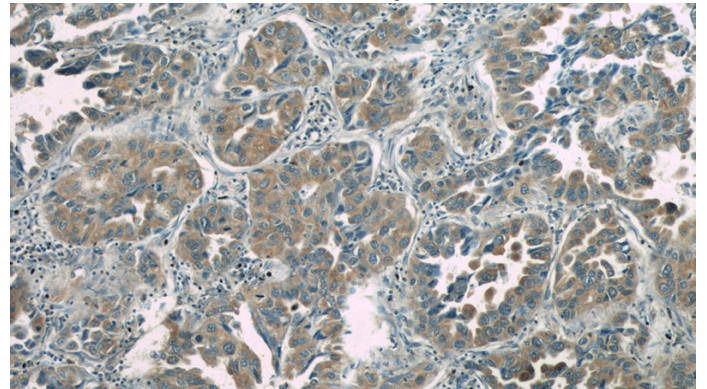
IHC: 1:20-1:200

IF: 1:20-1:200

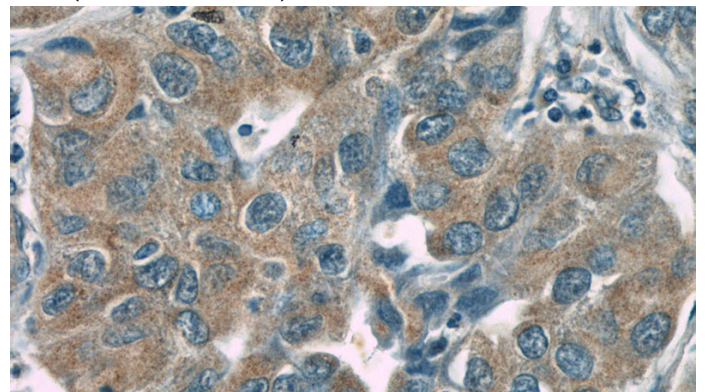
Validations



HEK-293 cells were subjected to SDS PAGE followed by western blot with Catalog No:108953(CC2D2A antibody) at dilution of 1:500



Immunohistochemistry of paraffin-embedded human lung cancer slide using Catalog No:108953(CC2D2A Antibody) at dilution of 1:50(under 10x lens)

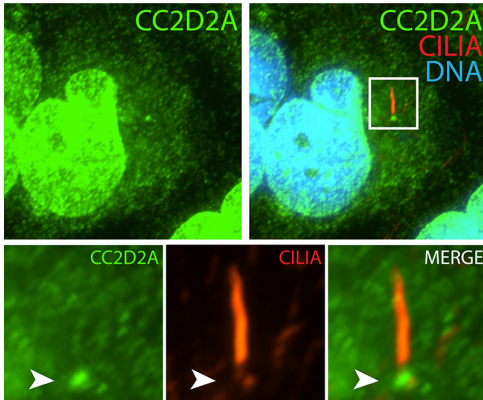


Immunohistochemistry of paraffin-embedded human lung cancer slide using Catalog No:108953(CC2D2A Antibody) at dilution of

CC2D2A antibody

Catalog Number: 108953

1:50(under 40x lens)



IF result (strong nucleus and the base stain) of anti-CC2D2A (Catalog No:108953, 1:50) with serum-starved hTERT-RPE1 (MeOH fixed) by Dr. Moshe Kim.