

# CAMP antibody

Catalog Number: 108927

## Product name

CAMP antibody

## Specificity

Human, Mouse; other species not tested.

## Antibody description

CAMP Rabbit Polyclonal antibody. Positive WB detected in mouse spleen tissue, Transfected HEK-293 cells. Positive IHC detected in human tonsillitis tissue, human spleen tissue. Observed molecular weight by Western-blot: 15 kDa

## Preparation

This antibody was obtained by immunization of CAMP recombinant protein (Accession Number: NM\_004345). Purification method: Antigen affinity purified.

## Formulation

PBS with 0.1% sodium azide and 50% glycerol pH 7.3.

## Storage

Store at -20°C. DO NOT ALIQUOT

## Clonality

Polyclonal

## Ig Type

Rabbit IgG

## Applications

ELISA, IHC, WB

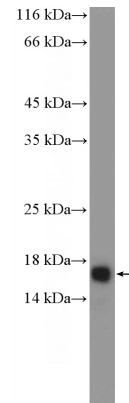
## Dilutions

Recommended Dilution:

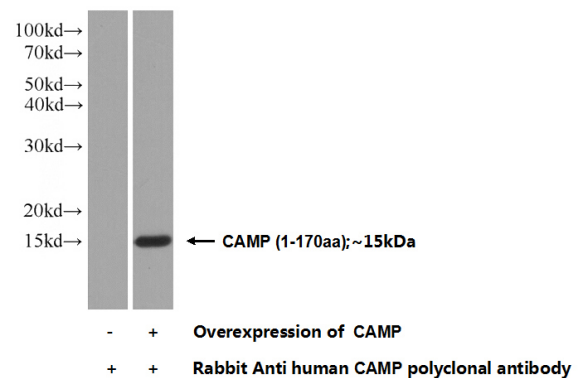
WB: 1:200-1:1000

IHC: 1:20-1:200

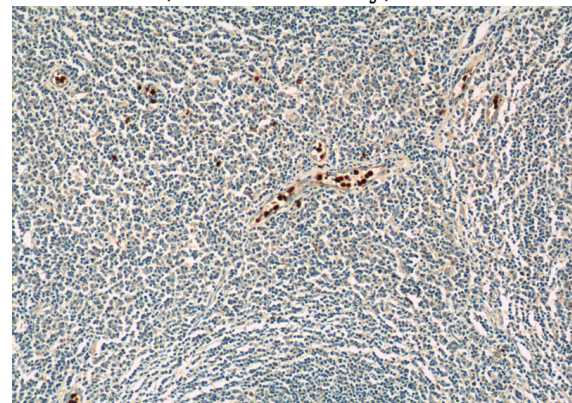
## Validations



mouse spleen tissue were subjected to SDS PAGE followed by western blot with Catalog No:108927(CAMP Antibody) at dilution of 1:300



Transfected HEK-293 cells were subjected to SDS PAGE followed by western blot with Catalog No:108927(CAMP Antibody) at dilution of 1:300



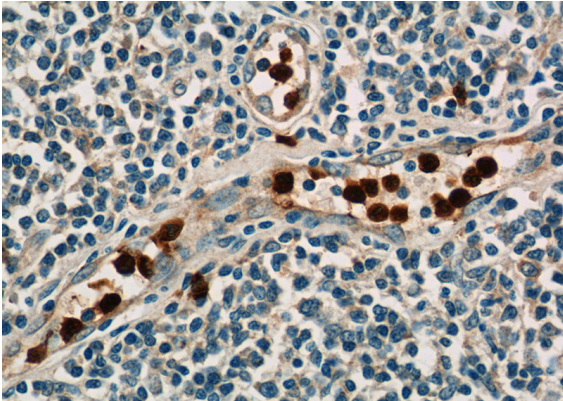
Immunohistochemistry of paraffin-embedded human tonsillitis tissue slide using Catalog No:108927(CAMP Antibody) at dilution of 1:50

# CAMP antibody

Catalog Number: 108927

---

(under 10x lens)



Immunohistochemistry of paraffin-embedded human tonsillitis tissue slide using Catalog No:108927(CAMP Antibody) at dilution of 1:50 (under 40x lens)